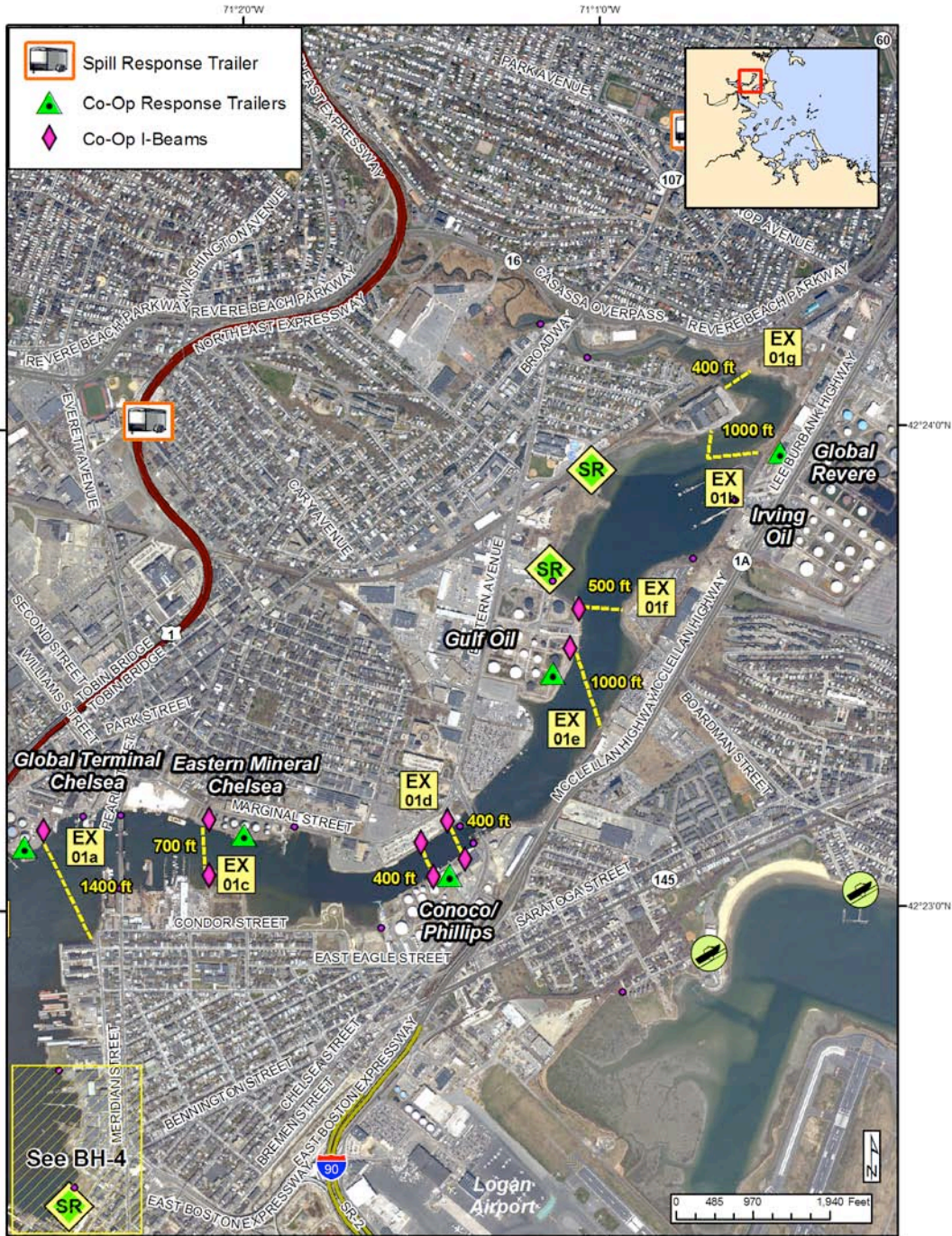




# Boston Harbor Geographic Response Plan

## Chelsea River BH-2



<b>BB</b> Beach Berm	<b>DF</b> Deflection Booming	<b>TG</b> Tide Gate	<b>Map Legend</b>
<b>CB</b> Culvert Block	<b>EX</b> Exclusion Booming	<b>L</b> Lock	
<b>DV</b> Diversion Booming	<b>SR</b> Shoreside Recovery	<b>BR</b> Boat Ramp	
<b>PR</b> Passive Recovery	<b>FO</b> Free-oil Recovery	<b>BM</b> Beach Berm Material	
		<b>OT</b> Outfall	
			--- Protected-water Boom (Flood Tide)
			--- Protected-water Boom (Ebb Tide)
			--- Snare or Sorbent Boom
			--- Booming Strategy Developed by Other Agency



Responders should always consider on-scene conditions before deploying GRP tactics. Tactics may not be safe or effective under certain conditions. Responder safety should always be the first priority. The strategies contained within this plan have been designed to mitigate a potential off-shore or off-site release that could impact the subject plan area. When responding to other types of spills these tactics will likely require significant modification.





# Boston Harbor Geographic Response Plan

## Chelsea River BH-2



ID	Location and Description	Response Strategy	Implementation
<b>BH-02-01</b>  	<b>a.) Global Terminal Chelsea</b> Lat. 42°23'2.71"N Lon. 71° 2'32.18"W  <b>b.) Global Revere</b> Lat. 42°23'56.73"N Lon. 71° 0'38.71"W  <b>c.) Eastern Mineral Chelsea</b> Lat. 42°23'8.38"N Lon. 71° 2'7.60"W  <b>d.) Conoco/Phillips</b> Lat. 42°23'6.55"N Lon. 71° 1'28.61"W  <b>e.) Gulf Oil</b> Lat. 42°23'26.59"N Lon. 71° 1'3.35"W  <b>f.) Gulf Oil</b> Lat. 42°23'36.48"N Lon. 71° 1'0.41"W  <b>g.) Head of Chelsea River</b> Lat. 42°24'6.59"N Lon. 71° 0'35.63"W	<b>Exclusion Booming</b> Prevent oil from entering the Chelsea river and migrating up the river towards the sensitive marshes.	The tactics shown in the diagram were developed by the Boston Oil Spill Co-Op and are incorporated within member organizations' Facility Response Plans and the Boston Harbor Area Contingency Plan. These tactics are intended to be implemented by the Co-Op rather than by local responders. Therefore it should not be necessary to implement these tactics using equipment from State Response Trailers. Contact the Co-Op, the US Coast Guard and/or MassDEP through the contacts listed on page 4 of this GRP to request/coordinate deployment of these strategies. The lengths of the booming strategies were estimated using a GIS program. The Co-Op trailers (shown by the green triangles) contain the material necessary to deploy the tactics in the diagram.  Estimated boom lengths:  a.) 1400ft b.) 1000ft c.) 700ft d.) 2 legs of 400ft e.) 1000ft f.) 500ft g.) 400ft
<b>BH-02</b>  	<b>Shoreline of Chelsea River located near:</b>  Lat. 42°23'42.31"N Lon. 71° 1'8.74"W	<b>Shoreside Recovery</b>  Deploy shoreside recovery tactics in areas with shoreline access.	Set up shoreside recovery tactics on beaches and along bulk heads. An ideal location for shoreside recovery would be along a road, where a Vac Truck would have easy access to the shore.





# Boston Harbor Geographic Response Plan

## Chelsea River BH-2

ID	Response Resources	Staging Area Site Access	Resources Protected	Special Considerations
<b>BH-02-01</b>  	<b>Contact the Co-Op for resources</b>	NOAA Chart 13272	<b>Fish</b> – Anadromous, Finfish  <b>Invertebrates</b> – Lobster, crab, shrimp  <b>Birds</b> – Shorebirds, Seabirds, Nesting Areas  <b>Reptiles</b> – Turtles  <b>Human Use</b> – Boat Ramp, Marina, Beach, Water Intake, Recreational Fishing, Mooring Field, Regional Park  <b>Habitat</b> – Beach, Rocky, Riprap, Tidal Flats, Marsh/Swamp	Vessel master should have local knowledge.  This is a State Management Area.  Tested: The Boston Harbor Spill Response Co-Op has tested some of the tactics shown in this plan.  Consider the time of year and relative presence of recreational boats when preparing to implement these strategies. Consult with the local harbormaster to develop a plan to address the presence of recreational boaters. Consider encouraging the immediate removal of recreational boats from target areas in the event of a spill if time allows.
<b>BH-02</b>  	<b>Deployment Equipment</b> Vac Truck or Shoreside Recovery system	From Eastern Avenue near Commonwealth Fuel Corporation.	Same as BH-02-01	Same as BH-02-01





**Site Photographs and Contact Information**



Site of EX-01a



Conoco Phillips. Site EX-01d



Near Global Revere. Sites EX-01b and EX-01g

**Contacts:**

Mass. Dept of Environmental Protection (24 Hours): 888-304-1133  
U.S. Coast Guard (24 Hours): 617-223-5757  
Boston Harbor Spill Response Co-Op: 617-951-9957  
Massport Police (24 Hours): 617-464-8250  
Chelsea Fire Department: 617-466-4600  
Chelsea Emergency Management: 617-466-4660  
Global Revere Terminal: 781-398-4150  
Global Chelsea Terminal: 617-660-1100  
Irving Terminal: 781.289.4201, ext. 300  
Gulf Oil: 617-884-5980  
Eastern Mineral Chelsea: 617-884-0027  
Boston Fire Department: 617-343-2880  
Boston PD Harbormaster: 617-343-4721  
Revere Fire Department: 781-286-8366  
Mass State Police: 508-820-2121  
DCR Locks: 617-727-0488  
DCR Radio Room: 617-722-1188  
Conoco Phillips: 617  
Boston Oil Spill Co-Op: Contact via Boston Line and Service Co.  
Global Chelsea: 617-660-4660

