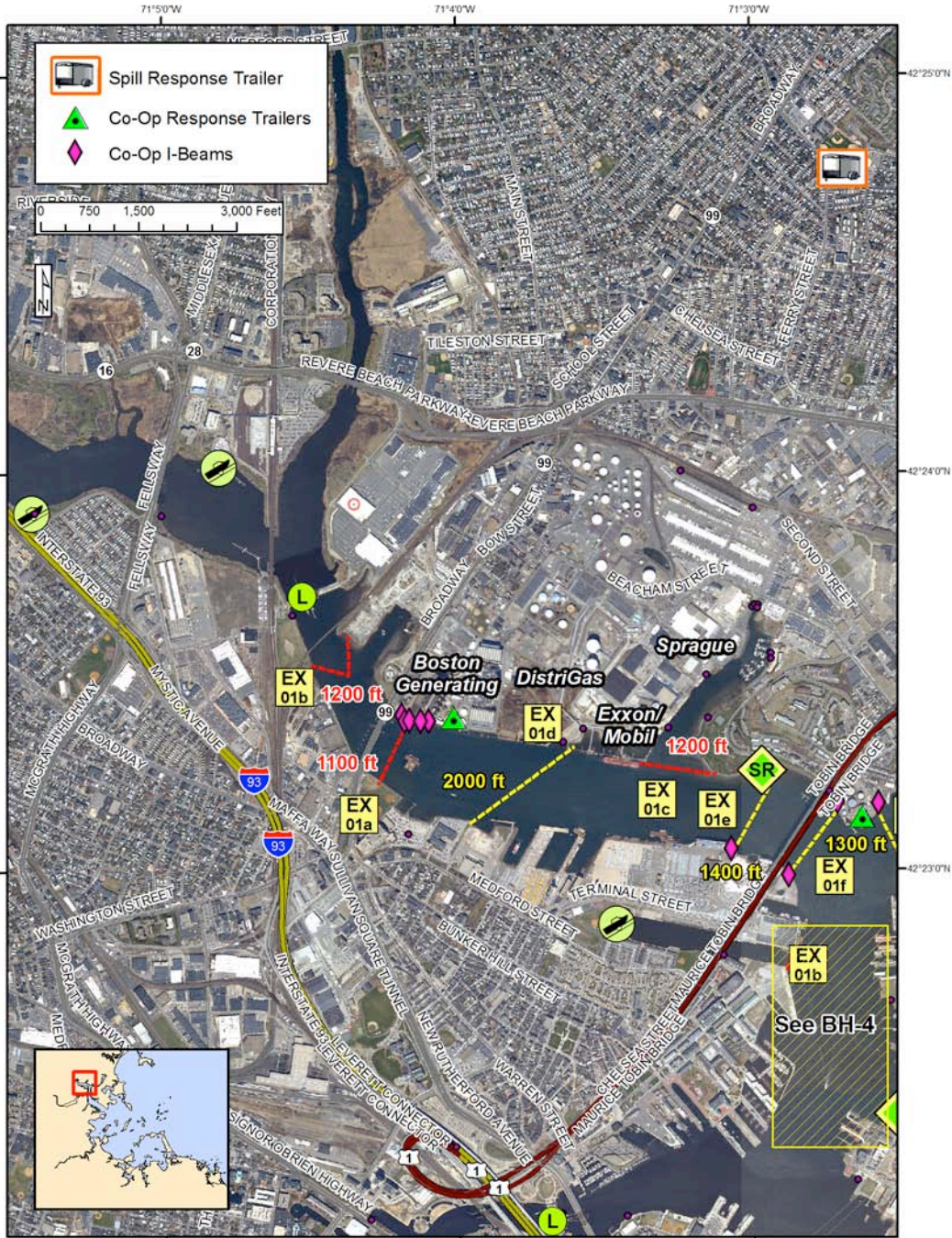




Boston Harbor Geographic Response Plan

Mystic River BH-3



Map Legend			
BB Beach Berm	DF Deflection Booming	TG Tide Gate	Protected-water Boom (Flood Tide)
CB Culvert Block	EX Exclusion Booming	L Lock	Protected-water Boom (Ebb Tide)
DV Diversion Booming	SR Shoreside Recovery	Boat Ramp	Snare or Sorbent Boom
PR Passive Recovery	FO Free-oil Recovery	Beach Berm Material	Booming Strategy Developed by Other Agency
		Outfall	



A total of 4 State Response Trailers are required to implement all of the tactics in this GRP.

Responders should always consider on-scene conditions before deploying GRP tactics. Tactics may not be safe or effective under certain conditions. Responder safety should always be the first priority. The strategies contained within this plan have been designed to mitigate a potential off-shore or off-site release that could impact the subject plan area. When responding to other types of spills these tactics will likely require significant modification.





Boston Harbor Geographic Response Plan
Mystic River BH-3



ID	Location and Description	Response Strategy	Implementation
<p>BH-03-01</p> 	<p>Various Locations</p> <p>a.) Alford St. Bridge Lat. 42°23'18.83"N Lon. 71° 4'14.61"W</p> <p>b.) Railroad Bridge Lat. 42°23'33.08"N Lon. 71° 4'26.91"W</p> <p>c.) Island End River Lat. 42°23'16.19"N Lon. 71° 3'16.70"W</p> <p>Co-Op Tactics:</p> <p>d.) Distrigas Lat. 42°23'12.10"N Lon. 71° 3'41.36"W</p> <p>e.) Mary O'Malley Park Lat. 42°23'10.06"N Lon. 71° 2'57.23"W</p> <p>f.) Mouth of the Mystic River Lat. 42°23'2.34"N Lon. 71° 2'44.76"W</p>	<p>Exclusion Booming Exclude oil from entering the identified sensitive areas on the Mystic River.</p> <p>The lock can be used to keep oil from migrating further up the Mystic River.</p>	<p>a.) Deploy 1100ft of boom in a single leg (two legs if possible) in front of the Alford St. Bridge, from Ryan Playground to the DistriGas facility.</p> <p>b.) Deploy 1200ft of boom in a closed chevron formation in front of the railroad bridge. This will prevent oil from reaching the lock.</p> <p>c.) Deploy 1200ft of boom in a single leg to prevent oil from entering the Island End River. This tactic is of high priority due to the outfalls located in this area.</p> <p>Deploy anchors every 200ft and tend throughout the tidal cycle.</p> <p>Tactics d, e & f have been designed by the Boston Harbor Oil Spill Co-Op and are incorporated within member organizations' Facility Response Plans and the Boston Harbor Area Contingency Plan. These tactics are intended to be implemented by the Co-Op rather than by local responders. These tactics are intended to be implemented by the Co-Op rather than by local responders. Therefore it should not be necessary to implement these tactics using equipment from State Response Trailers. Contact the Co-Op, the US Coast Guard and/or MassDEP through the contacts listed on page 4 of this GRP to request/coordinate deployment of these strategies. The lengths of the booming strategies were estimated using a GIS program. The Co-Op trailers (shown by the green triangles) contain the material necessary to deploy the tactics in the diagram. Estimated lengths of booming strategies: d.) 2000ft. e.) 1400ft. f.) 1300ft.</p>
<p>BH-03</p> 	<p>Mary O'Malley Waterfront Park</p> <p>Lat. 42°23'14.33"N Lon. 71° 3'4.39"W</p>	<p>Shoreside Recovery Deploy shoreside recovery tactics to areas with shoreline access.</p>	<p>Set up shoreside recovery tactics on beaches and along bulk heads. An ideal location for shoreside recovery would be a place with close road access, where a Vac Truck could easily be placed.</p>





Boston Harbor Geographic Response Plan

Mystic River BH-3

ID	Response Resources	Staging Area Site Access	Resources Protected	Special Considerations
BH-03-01 	Deployment <i>Equipment (Tactics a,b & c)</i> 3500 ft 18” boom 15 anchor systems 6 anchor stakes Vessels 2 skiffs Personnel/Shift 6-8 total (1 vessel operator + 1 responder per vessel, 4 shoreside responders) Tending Vessels 1 skiff Personnel/Shift 3-4 total (1 vessel operator + 1 responder per vessel, 2 shoreside responders)	There are boat ramps located at the Wellington Yacht Club (off of Constitution Way) and along Shore Drive (off of 93). There is an additional boat ramp referenced in BH-4. From Hwy 1, turn onto Medford Street then take a right on to Terminal Street. The boat ramp is located by the parking lot at the Little Mystic Access Area. NOAA Chart 13272	Fish – Anadromous, Finfish Invertebrates – Lobster, crab, shrimp Birds – Shorebirds, Seabirds, Nesting Areas Human Use – Boat Ramp, Marina, Beach, Water Intake, Recreational Fishing, Mooring Field, Lock/Dam, Regional Park Habitat – Beach, Rocky, Riprap, Tidal Flats, Marsh/Swamp	To close the Lock, contact the Department of Conservation & Recreation. Before deploying EX01e or EX01f, contact Massport. Tested: The Boston Harbor Spill Response Co-Op has tested some of the tactics shown in this GRP. Consider the time of year and relative presence of recreational boats when preparing to implement these strategies. Consult with the local harbormaster to develop a plan to address the presence of recreational boaters. Consider encouraging the immediate removal of recreational boats from target areas in the event of a spill if time allows.
BH-03 	Deployment <i>Equipment (All sites)</i> Vac Truck or shoreside recovery system	Access to the Waterfront Park is off of Commandants Way.	Same as BH-03-01	Same as BH-03-01





Site Photographs and Contact Information



Boat Ramp at Wellington Yacht Club



Lock located in Mystic River



Access from Mary O'Malley Waterfront Park



Lock located in Mystic River



Boat Ramp at Blessing of the Bay

Contacts:

Mass. Dept of Environmental Protection (24 Hours): 888-304-1133
 U.S. Coast Guard (24 Hours): 617-223-5757
 Boston Harbor Spill Response Co-Op, through Boston Line & Service Co.: 617-951-9957
 Distrigas: 617-381-8554
 Exxon Mobil: 617-381-2813
 Boston Generating: 617-381-2374
 Sprague - Everett: 617-389-9173
 Everett Police Marine Unit: 617-905-3747, 617-387-1212
 Everett Fire Department: 617-387-7443
 Dept of Conservation & Recreation Rangers (24 Hour): 617-722-1188
 Boston Oil Spill Co-Op: Contact via Boston Line and Service Co.
 Global Chelsea: 617-660-4660
 Boston Fire Department: (617) 343-2880
 Boston Police Harbor Master: 617-343-4721
 Mass State Police: 508-820-2121
 Chelsea Fire Department: 617-466-4600
 Chelsea Emergency Management: 617-466-4660
 Mystic Power Station: XXX-XXX-XXXX
 Dept of Conservation & Recreation - Locks: (617) 727-0488

