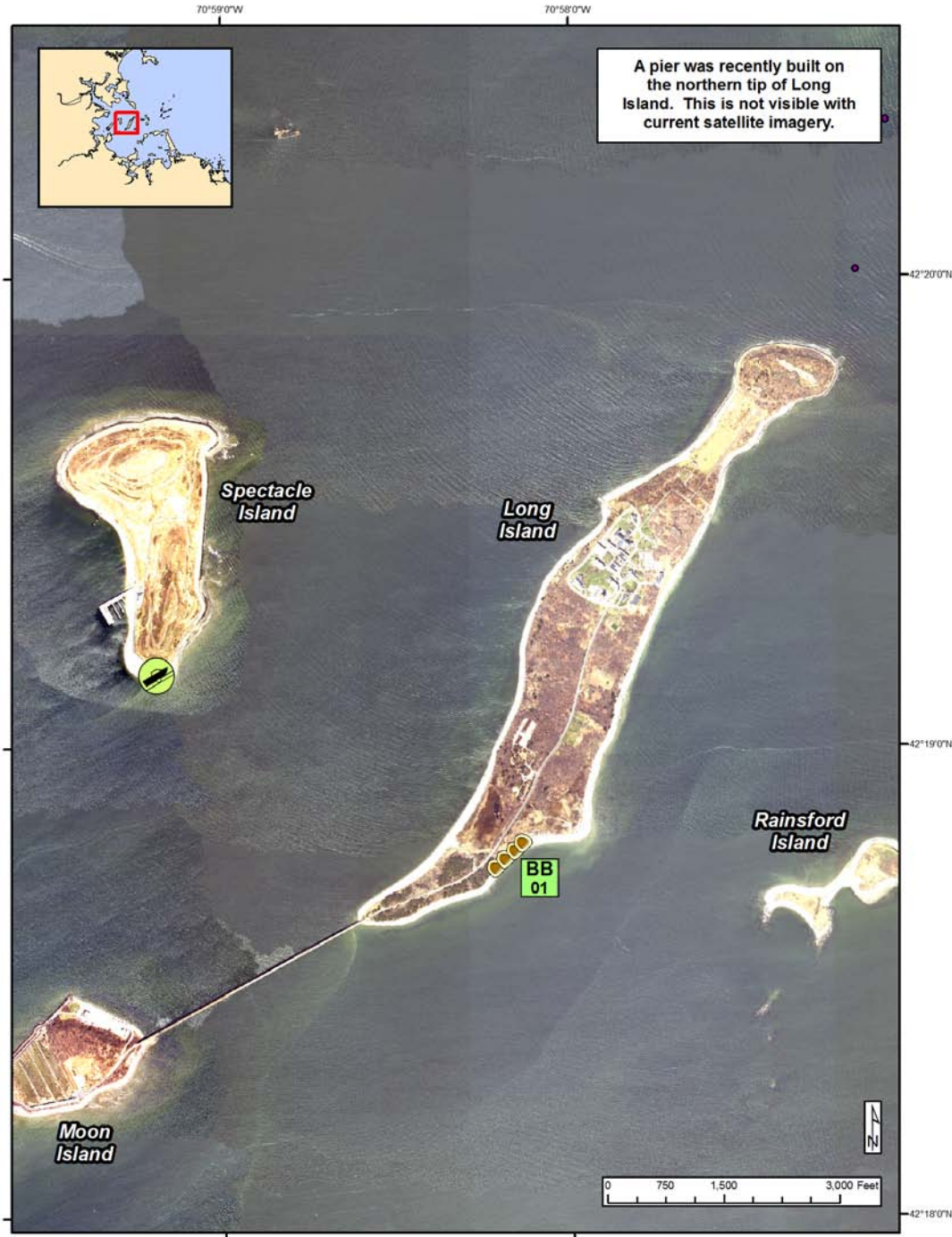




# Boston Harbor Geographic Response Plan

## Spectacle & Long Island BH-17



A pier was recently built on the northern tip of Long Island. This is not visible with current satellite imagery.


Map Legend			
<b>BB</b> Beach Berm	<b>DF</b> Deflection Booming	<b>TG</b> Tide Gate	Protected-water Boom (Flood Tide)
<b>CB</b> Culvert Block	<b>EX</b> Exclusion Booming	<b>L</b> Lock	Protected-water Boom (Ebb Tide)
<b>DV</b> Diversion Booming	<b>SR</b> Shoreside Recovery	<b>BR</b> Boat Ramp	Snare or Sorbent Boom
<b>PR</b> Passive Recovery	<b>FO</b> Free-oil Recovery	<b>BBM</b> Beach Berm Material	Booming Strategy Developed by Other Agency
		<b>OF</b> Outfall	

A total of 1 State Response Trailer is required to implement all of the tactics in this GRP. Responders should always consider on-scene conditions before deploying GRP tactics. Tactics may not be safe or effective under certain conditions. Responder safety should always be the first priority. The strategies contained within this plan have been designed to mitigate a potential off-shore or off-site release that could impact the subject plan area. When responding to other types of spills these tactics will likely require significant modification.





**Boston Harbor Geographic Response Plan**  
Spectacle & Long Island BH-17

ID	Location and Description	Response Strategy	Implementation
<b>BH-17-01</b>  	<b>Southern shore of Long Island near:</b>  Lat. 42°18'47.13"N Lon. 70°58'7.94"W	<b>Beach Berm</b> Prevent oil from entering the interior marsh on Long Island.	Permits for earth-moving to construct beach berms are required from state and federal agencies (MADEP, Army Corp) and concurrence from Natural Resource Trustee Agencies may also be required. Beach berms should not be constructed without explicit direction from the Unified Command.  Build a beach berm approximately 300 ft long. Use local beach and inter-tidal bar sediments. Do not destroy any part of foreshore. If the dike is expected to remain in place for more than a few days, place one or more 20' x 12" pipe in the channel and build the dike on top of the pipe. Use culvert plugs to control water flow through the pipe.





**Boston Harbor Geographic Response Plan**  
Spectacle & Long Island BH-17

ID	Response Resources	Staging Area Site Access	Resources Protected	Special Considerations
<p><b>BH-17-01</b></p> <p><b>BB</b></p>	<p><b>Deployment</b> <b>Equipment</b> Local beach material 1 tractor with front end loader 2 pipe (20' x 12") 2 culvert plugs 24 sand bags 2 spade shovels 1 air pump <b>Personnel/Shift</b> 3-4 shoreside responders</p>	<p>There is a potential staging area located on the southern shore of Spectacle Island.</p> <p>There is road access to Long Island via the Long Island Bridge.</p> <p>NOAA Chart 13270</p>	<p><b>Marine Mammals</b> – Harbor Porpoise, Harbor Seals</p> <p><b>Fish</b> – Anadromous, Finfish</p> <p><b>Birds</b> – Shorebirds, Seabirds, Nesting Sites</p> <p><b>Invertebrates</b> – Lobster, crab, shrimp, shellfish</p> <p><b>Threatened Species</b> – Rare Plants</p> <p><b>Human Use</b> – Access, Beach, Boat Ramp, Ferry, Marina, Mooring Field, Recreational Fishing</p> <p><b>Habitat</b> - Beach, Marsh/Swamp, Rocky, Riprap, Tidal Flats</p>	<p>Coordinate with DCR</p> <p>Monitor for incoming oil</p> <p>Consider the time of year and relative presence of recreational boats when preparing to implement these strategies. Consult with the local harbormaster to develop a plan to address the presence of recreational boaters. Consider encouraging the immediate removal of recreational boats from target areas in the event of a spill if time allows.</p> <p>Moon Island has a series of constructed former sewage treatment lagoons. These lagoons may connect to the ocean and should be blocked in the event of a spill.</p>





### Site Photographs and Contact Information



Dock on the Southwestern shore of Spectacle Island



Interior marsh located on Long Island.



Possible staging area on Spectacle Island

**Contacts**

Army Corps of Engineers: 978-318-8111  
Dept of Conservation & Recreation Rangers (24 Hours):  
617-722-1188  
Mass. Dept of Environmental Protection (24 Hours):  
888-304-1133  
U.S. Coast Guard (24 Hours): 617-223-5757  
US-DOI-National Parks Boston Harbor Islands  
Superintendent: 617-480-4845

