

GRP EXERCISE PLAN

Stage Harbor GRP Exercise 09/27 8:30am to 12:30 pm

Objectives

- Simulate actual incident – Fire Chiefs take lead in assigning personnel, implementing tactics.
- Develop tactical and operational plans to assign personnel and resources for GRP deployment.
- Deploy equipment from Chatham/Harwich response trailers.
- Provide opportunity for responders from Chatham, Harwich, USCG, MassDEP, and other agencies to work together in a Task Force setting.
- Provide opportunity for responders to gain experience setting boom and anchors.
- Deploy DV-01e using Chatham equipment.
 - Evaluate Stage Harbor parking lot as staging area and review site access considerations.
 - Evaluate and identify any changes or modifications necessary to achieve goal of diverting oil for shoreside recovery.
- Deploy EX-02b using Harwich equipment.
 - Identify any changes or modifications necessary to achieve goal of excluding oil from migrating up the Mitchell River and entering the harbor.
 - Evaluate logistical challenges associated with deploying boom in two separate tactics.
- Document all activities.
- Conduct post-deployment “hot wash” to identify lessons learned.
- Identify any planning or deployment gaps brought out by the GRP field exercise.

Participants

Based on initial planning, participants will include individuals from:

- Chatham Harbormaster
- Chatham Shellfish Constable
- Chatham Fire Dept.
- Harwich Harbormaster
- Harwich Fire Dept.
- Mass DEP
- U.S. Coast Guard Sector SENE
- U.S. Coast Guard Chatham Station
- Moran Environmental
- Nuka Research and Planning Group (facilitator)

Schedule of Events

Time	Event	Location/Details
8:30	Meet for briefing and review	Stage Harbor parking lot. Will present scenario, assign personnel, review protective booming and equipment, and develop an Operational Plan and Comms Plan.
9:30	Group safety briefing	Safety briefing and review of equipment in Chatham/Harwich trailers.
9:45	Deploy DV-01e. Leave boom in place to evaluate anchor holding	Load boom to vessels from trailer at boat ramp. Responders will deploy boom as drawn in plan. Other task forces and observers/evaluators will watch from vessels/shore.
10:30	Deploy EX-02b	Load boom from trailer at boat ramp. Responders will deploy boom as drawn in plan. Other task forces and observers/evaluators will watch from vessels/shore.
11:30	Demobilize DV-01e	Evaluate tactic, remove boom and anchors, rinse & store boom in trailer.
12:00	Demobilize EX-02b	Evaluate tactic, remove boom and anchors, rinse & store boom in trailer.
12:15	Debrief	Reconvene at Stage Harbor parking lot for debrief.
12:30	Adjourn	

General Logistics

- General briefing and safety briefing to take place at Stage Harbor parking lot.
- Review equipment in trailers
- Chatham Trailer staged at Stage Harbor boat ramp 09/27/11
- Harwich Trailer staged at Stage Harbor boat ramp 09/27/11
- All vessels will be moored at Stage Harbor boat ramp during safety briefing
- Parking will be available at the boat ramp
- Chatham Harbormaster will open drawbridge
- Rinse boom after exercise using hoses at the harbor
- Snacks and beverages will be provided to all participants
- USCG will issue NTM regarding deployment tests

Support Equipment

Vessels

Preliminary list of vessels:

- Chatham
 - 4 vessels
- Harwich
 - 1 vessel

Personnel

Response personnel TBA based on attendance.

Boom

1,000 feet Chatham Trailer (mixed 12" and 18")

1,000 feet Harwich Trailer (mixed 12" and 18")

Other Information

Tides (Stage Harbor) September 27

High 1		Low 1		High 2		Low 2	
12:10	4.97 ft	5:31	-0.46 ft			17:58	-0.65 ft

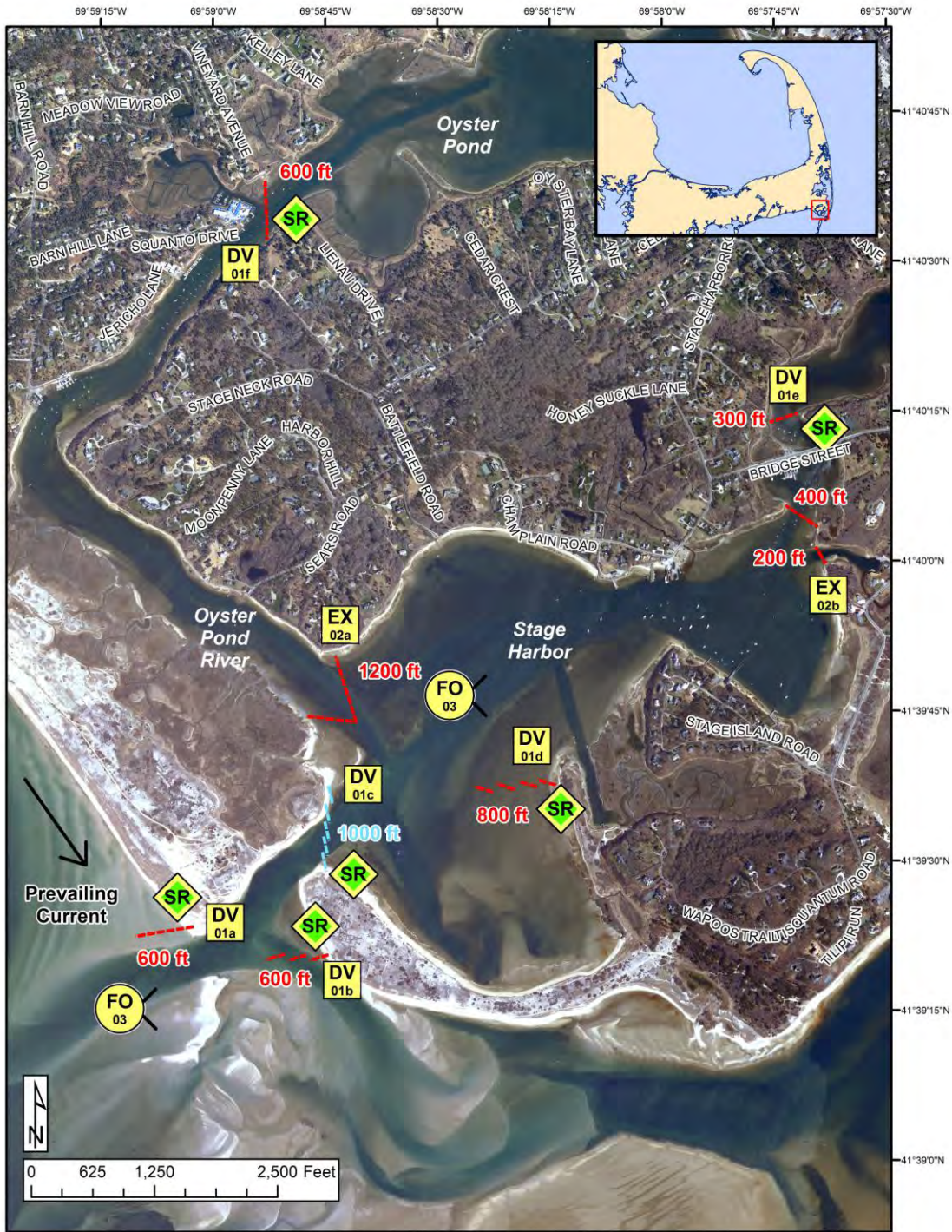
Attachments

CC-11



Cape and Islands Geographic Response Plan

Stage Harbor CI-11






Map Legend			
BB Beach Berm	DF Deflection Booming	MD Mosquito Ditch	Protected-water Boom (Flood Tide)
CB Culvert Block	EX Exclusion Booming	U.S. Coast Guard Station	Protected-water Boom (Ebb Tide)
DV Diversion Booming	Shoreside Recovery	Boat Ramp	Beach Berm Material
PR Passive Recovery	FO Free-oil Recovery	Snare or Sorbent Boom	

A total of 6 State Response Trailers are required to implement all of the tactics in this GRP. Responders should always consider on-scene conditions before deploying GRP tactics. Tactics may not be safe or effective under certain conditions. Responder safety should always be the first priority.





Cape and Islands Geographic Response Plan
Stage Harbor CI-11




ID	Location and Description	Response Strategy	Implementation
<p>CI-11-01</p> 	<p>Stage Harbor</p> <p>a. Lat. 41°42'37.8"N Lon. 69°58'5.9"W</p> <p>b. Lat. 41°42'41.6"N Lon. 69°58'21.7"W</p> <p>c. Lat. 41°42'41.6"N Lon. 69°58'21.7"W</p> <p>d. Lat. 41°42'41.6"N Lon. 69°58'21.7"W</p> <p>Mill Pond</p> <p>e. Lat. 41°42'41.6"N Lon. 69°58'21.7"W</p> <p>Oyster Pond</p> <p>f. Lat. 41°42'41.6"N Lon. 69°58'21.7"W</p>	<p>Divert and Collect-Shoreside</p> <p>Use 16 to 18" boom in the identified patterns in the Stage Harbor complex to divert oil to the identified shoreside collection locations.</p>	<p>Deploy anchors and boom with skiffs.</p> <p>For (a & b) place 16 to 18" boom at an adequate angle to use the prevailing currents outside the harbor to divert incoming oil to the collection sites. (a) is a single 600 ft. boom section; (b) is a cascaded series of 3x200 ft. sections of boom. The (b) array may be adjusted and moved in the entrance of the harbor if it is not feasible outside entrance due to sea-state.</p> <p>(c) is an ebb tide deployment for oil leaving the harbor. Cascade 5x 200 ft. 16 to 18" booms to divert oil to the collection site.</p> <p>If significant amount of oil has entered the harbor use array (d) to collect oil. 4 x 200 ft. sections of 16 to 18" boom.</p> <p>(e) is 300 ft. of 16 to 18" boom and should be deployed in conjunction with (EX-02b) to collect any spilled oil from the local small boat harbor.</p> <p>(f) is 600 ft. of 16 to 18" boom and should be deployed to collect any spilled oil from the nearby local small boat harbor.</p> <p>Set up shoreside recovery as necessitated by the volume of oil and tend throughout the tide.</p>
<p>CI-11-02</p> 	<p>Stage Harbor</p> <p>Oyster Pond</p> <p>a. Lat. 41°42'49.5"N Lon. 69°59'38.1"W</p> <p>Mitchell River</p> <p>b. Lat. 41°42'41.6"N Lon. 69°58'21.7"W</p>	<p>Exclusion</p> <p>Exclude oil from entering or leaving Oyster Pond.</p>	<p>Deploy anchors and boom with skiffs at high tide.</p> <p>For (a) place 1200 ft. of 16 to 18" boom in a chevron pattern at the mouth of the Oyster Pond River. If oil is coming from the pond, invert the array to provide protection for Stage Harbor.</p> <p>For (b) deploy a 200 ft. leg of 16 to 18" boom and a 400 ft. leg of 16 to 18" boom together to block the entrances of the two rivers.</p> <p>Secure with anchor stakes on shore and anchors in midstream.</p> <p>Tend throughout the tide.</p>
<p>CI-11-03</p> 	<p>Stage Harbor</p> <p>Nearshore waters in the general area of:</p> <p>Lat. 41°43'37.2"N Lon. 69°58'4.0"W</p>	<p>Free-oil Recovery</p> <p>Maximize free-oil recovery in the offshore & nearshore environment of Stage Harbor depending on spill location and trajectory.</p>	<p>Deploy free-oil recovery strike teams upwind and up current of the Stage Harbor.</p> <p>Use aerial surveillance to locate incoming slicks.</p> <p>Ensure that responders have experience with on-water free-oil recovery.</p>





Cape and Islands Geographic Response Plan

Stage Harbor CI-11

ID	Response Resources	Staging Area Site Access	Resources Protected	Special Considerations
CI-11-01 	Deployment <i>Equipment</i> 3900 ft. 16 to 18" boom 27 anchor systems 9 anchor stakes 5 shoreside recovery systems (if possible) <i>Vessels</i> 4 skiffs <i>Personnel/Shift</i> 22 possible total (1 vessel operator + 1 responders per vessel, 2 shoreside responder per collection site) Tending <i>Vessels</i> 2 skiffs <i>Personnel/Shift</i> 11 possible total (1 vessel operator + 1 responder per vessel, 1 shoreside responder per site)	Monomoy Yacht Club and parking area (Rte 28 to Stage Harbor Road to Bridge St.) There are small boatyards/marinas on both Oyster Pond and Mill Pond with road access, parking, and boat ramps/small docks. Road access is available the shoreline. Via marine waters for deploying and tending boom. Boat ramps may not be useable at low tide. Chart 13248-1	Fish-shellfish, finfish Birds-waterfowl concentration Habitat- marsh, sheltered tidal flats, barrier beach Human Use- aquaculture, high-use recreational area Threatened/Endangered species- Piping Plovers (April 1 – August 31), Roseate Terns (foraging mid-July thru Sept 30) Land mgt: NWR	Vessel master should have local knowledge. Some sites for this tactic may not be necessary depending on the amounts of oil and its trajectory. Use caution in sandy dunes during months when plovers are present. Nesting areas may include beaches, sandspits, foredunes, and washover areas in dunes. Consult with USFWS as early as possible regarding shoreline collection areas and access plans. Use caution operating in nearshore areas when Roseate Terns are foraging. Consult with USFWS as early as possible. Entire site surveyed: 10/17/07 Tested: not yet
CI-11-02 	Deployment <i>Equipment</i> 1800 ft. 16 to 18" boom 6 small anchor systems 6 anchor stakes <i>Vessels/Personnel/Shift</i> Same as CI-11-01 Tending <i>Vessels/Personnel/Shift</i> Same as CI-11-01	Same as CI-11-01	Same as CI-11-01	Vessel master should have local knowledge. Tested: not yet
CI-11-03 	Deploy multiple free-oil recovery strike teams as required to maximize interception of oil before it impacts sensitive areas.	Same as CI-11-01	Same as CI-11-01	Vessel master should have local knowledge. Use extreme caution, shoal waters with rocks & continually shifting sand bars. Currents and winds are locally variable and can create dangerous operating environments.





Site Photographs and Contact Information



Clockwise, starting above with (1) Stage Harbor looking northwest. (2) Stage Harbor looking north. (3) Morris Island looking northwest. (4) Eldridge Point looking north. (5) Stage Harbor looking northeast. (6) Harding Beach Point looking east.

Contact Information:

Chatham-Coastal Resources Dept.: (508) 945-5176
Chatham-Fire: (508) 945-2324
Chatham-Harbormaster: (508) 945-5185
Monomoy NWR: (508) 945-0594
Nantucket Soundkeeper: (508) 775-9767
USFWS: (413) 539-3194

