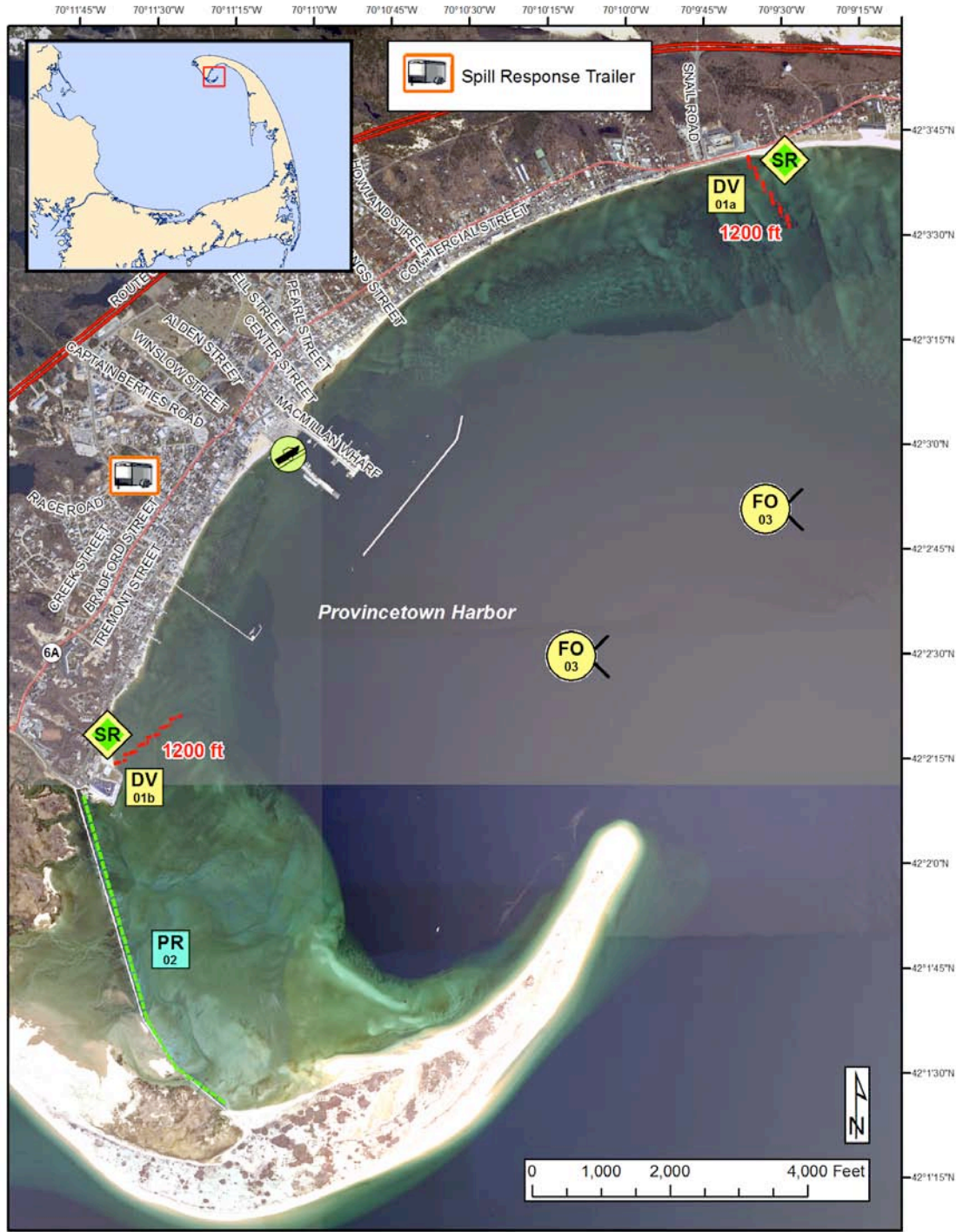




Cape and Islands Geographic Response Plan

Provincetown CI-07






Map Legend			
BB Beach Berm	DF Deflection Booming	MD Mosquito Ditch	Protected-water Boom (Flood Tide)
CB Culvert Block	EX Exclusion Booming	U.S. Coast Guard Station	Protected-water Boom (Ebb Tide)
DV Diversion Booming	SR Shoreside Recovery	Boat Ramp	Snare or Sorbent Boom
PR Passive Recovery	FO Free-oil Recovery	Beach Berm Material	

A total of 3 State Response Trailers are required to implement all of the tactics in this GRP. Responders should always consider on-scene conditions before deploying GRP tactics. Tactics may not be safe or effective under certain conditions. Responder safety should always be the first priority.








Cape and Islands Geographic Response Plan
Provincetown CI-07

ID	Location and Description	Response Strategy	Implementation
<p>CI-07-01</p> 	<p>Provincetown Harbor a. Lat. 42°03'44.8"N Lon. 70°09'11.0"W b. Lat. 42°02'14.8"N Lon. 70°11'38.4"W</p>	<p>Divert and Collect - Shoreside Place and anchor sections of boom in a cascaded fashion to divert the oil to the identified shoreside collection locations.</p>	<p>Deploy anchors and boom with skiffs (class 6) on a rising tide. For (a & b) place 6 x 200 ft. sections of 16 to 18" boom at each site in a cascaded fashion to divert incoming oil to the collection sites. Set up shoreside recovery units. Tend throughout the tide.</p>
<p>CI-07-02</p> 	<p>Provincetown Harbor Lat. 42°01'47.9"N Lon. 70°11'38.3"W</p>	<p>Passive Recovery Place passive recovery tactics to recover oil and prevent it from entering sensitive areas. Deploy at locations that are likely to be impacted and the booms can be adequately secured.</p>	<p>Place and anchor snare or sorbent boom along the breakwater in Provincetown Harbor. Replace as necessary to maximize the recovery.</p>
<p>CI-07-03</p> 	<p>Provincetown Harbor Nearshore waters in the general area of: Lat. 42°03'00.6"N Lon. 70°09'19.0"W</p>	<p>Free-oil Recovery Maximize free-oil recovery in the offshore & nearshore environment of Provincetown Harbor depending on spill location and trajectory.</p>	<p>Deploy free-oil recovery strike teams upwind and up current of the Provincetown Harbor. Use aerial surveillance to locate incoming slicks.</p>





Cape and Islands Geographic Response Plan
Provincetown CI-07

ID	Response Resources	Staging Area Site Access	Resources Protected	Special Considerations
<p>CI-07-01</p> 	<p>Deployment <i>Equipment</i> 2400 ft. 16 to 18” boom 22 anchor systems 2 anchor stakes 2 shoreside recovery systems</p> <p><i>Vessels</i> 2 skiffs</p> <p><i>Personnel/Shift</i> 6 total (1 vessel operator + 1 responders per vessel, 2 shoreside recovery responder)</p> <p>Tending <i>Vessels</i> 1 skiff</p> <p><i>Personnel/Shift</i> 4 total (1 vessel operator + 1 responders per vessel, 2 shoreside responders)</p>	<p>There are 14 landings in Provincetown, check with local officials for the most advantageous. MacMillian Pier or Town Landing Boat Ramp at west end of Provincetown Harbor.</p> <p>To MacMillan Pier, Rte 6E, left on Conwell, right on Bradford, Left on Ryder, Right on Commercial St.</p> <p>Town landing at west end of Commercial St.</p> <p>Vehicle access to Long Point may be arranged through CCNS</p> <p>Boat ramp not useable on low tides</p> <p>Via marine waters</p> <p>Chart 13249-1</p>	<p>Fish-shellfish, finfish Birds-waterfowl concentration</p> <p>Marine mammals-seals</p> <p>Habitat- marsh, sheltered tidal-flats</p> <p>Human Use- Commercial boat harbor, aquaculture, high-use recreational area</p> <p>Threatened/Endangered species- Piping Plovers (April 1 – August 31)</p> <p>Land mgt: CCNS</p>	<p>Vessel master should have local knowledge.</p> <p>Entire site surveyed: 10/16/07.</p> <p>Federal and State listed threatened wildlife may be present, particularly from March through August, limiting site access, especially near Long Point and along Cape Cod Bay beaches. Coordinate with CCNS, USFWS, and the Mass. Natural Heritage and Endangered Species Program.</p> <p>Use caution in sandy dunes during months when plovers are present. Nesting areas may include beaches, sandspits, foredunes, and washover areas in dunes. Consult with USFWS as early as possible regarding shoreline collection areas and access plans.</p> <p>Tested: not yet</p>
<p>CI-07-02</p> 	<p>Deployment <i>Equipment</i> 5000 ft. snare or sorbent boom 100 anchor stakes</p> <p><i>Vessels/Personnel/Shift</i> Same as CI-07-01</p> <p>Tending <i>Vessels/Personnel/Shift</i> Same as CI-07-01</p>	<p>Same as CI-07-01</p>	<p>Same as CI-07-01</p>	<p>Use snare boom for persistent oils and sorbent boom for non-persistent oils.</p>
<p>CI-07-03</p> 	<p>Deploy multiple free-oil recovery strike teams as required to maximize interception of oil before it impacts sensitive areas.</p>	<p>Same as CI-07-01</p>	<p>Same as CI-07-01</p>	<p>Vessel master should have local knowledge.</p> <p>Use extreme caution, shoal waters with numerous reefs, rocks & continually shifting sand bars. Currents and winds are locally variable and can create dangerous operating environments.</p>





Site Photographs and Contact Information



Contact Information:

CCNS: (508) 349-3785
Provincetown-Fire: (508) 487-7023
Provincetown-Harbormaster:
(508) 487-7030
Provincetown-Shellfish:
(508) 487-7030
USFWS: (413) 539-3194

Provincetown Harbor looking east.



Provincetown Harbor looking southeast.



Provincetown Harbor looking northwest.

