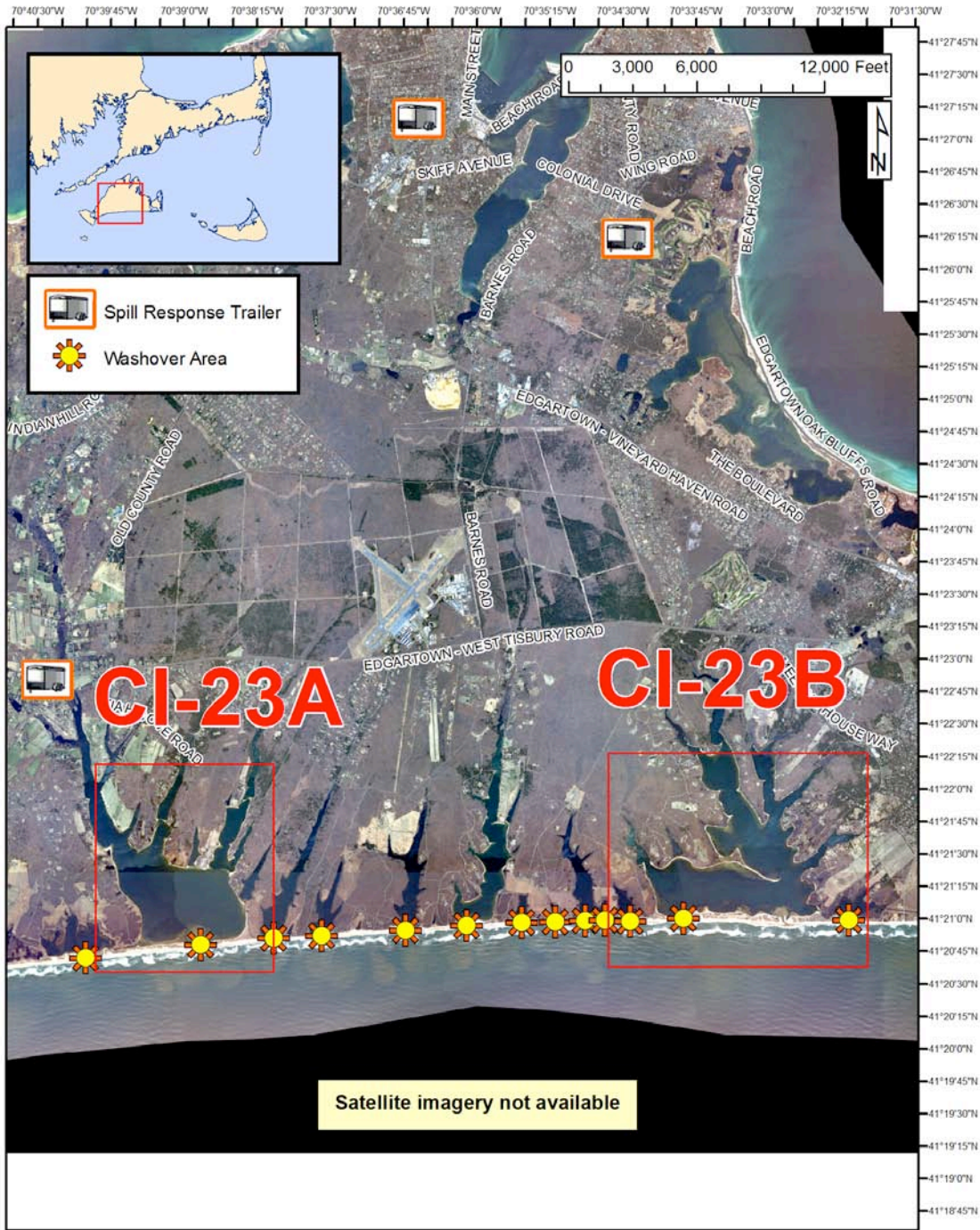




# Cape and Islands Geographic Response Plan

## Martha's Vineyard Southshore CI-23



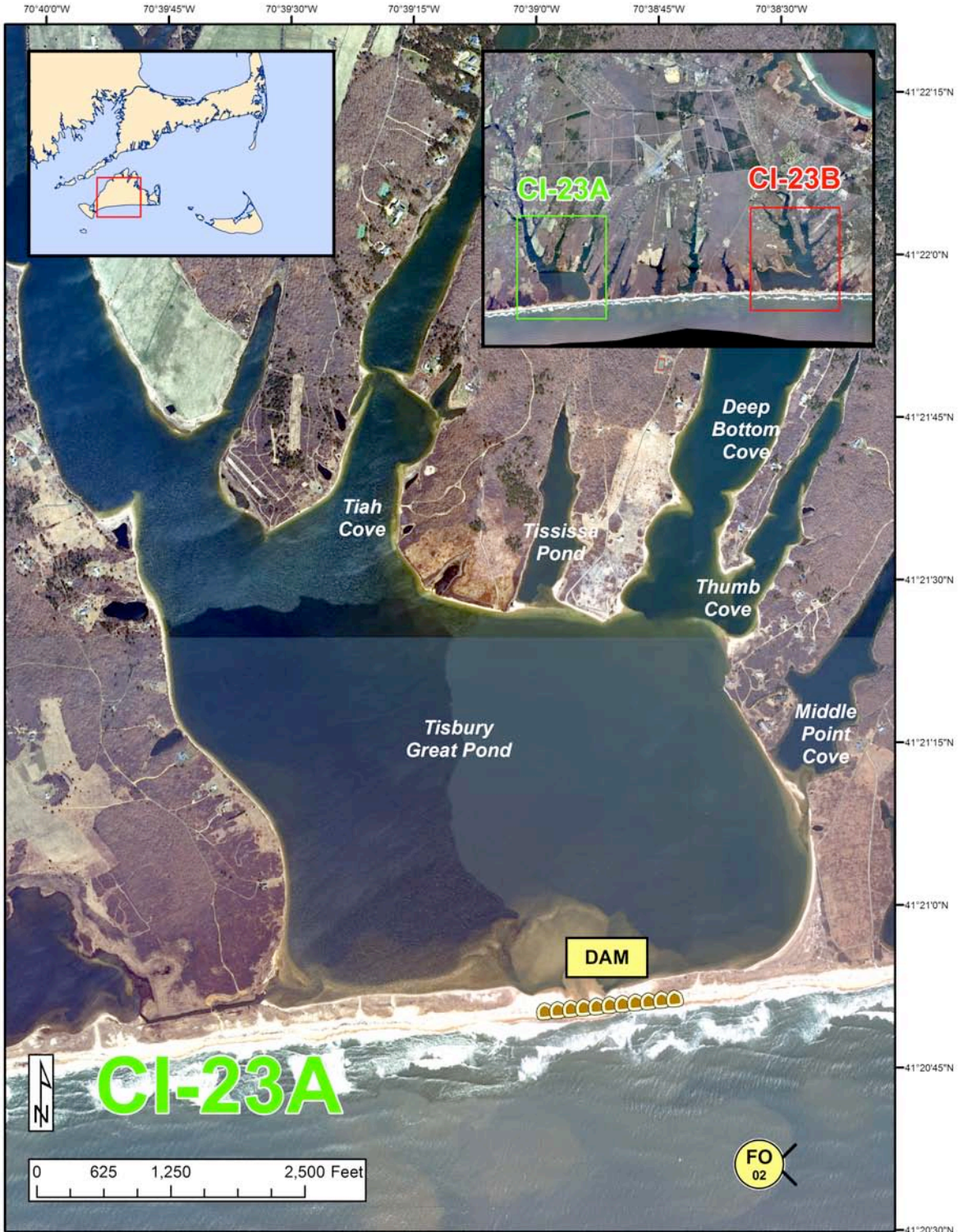
Map Legend			
<b>BB</b> Beach Berm	<b>DF</b> Deflection Booming	<b>MD</b> Mosquito Ditch	<b>---</b> Protected-water Boom (Flood Tide)
<b>CB</b> Culvert Block	<b>EX</b> Exclusion Booming	U.S. Coast Guard Station	<b>---</b> Protected-water Boom (Ebb Tide)
<b>DV</b> Diversion Booming	<b>SR</b> Shoreside Recovery	Boat Ramp	Beach Berm Material
<b>PR</b> Passive Recovery	<b>FO</b> Free-oil Recovery	<b>---</b> Snare or Sorbent Boom	

A total of 1 State Response Trailer is required to implement all of the tactics in this GRP. Responders should always consider on-scene conditions before deploying GRP tactics. Tactics may not be safe or effective under certain conditions. Responder safety should always be the first priority.





**Cape and Islands Geographic Response Plan**  
Martha's Vineyard Southshore CI-23



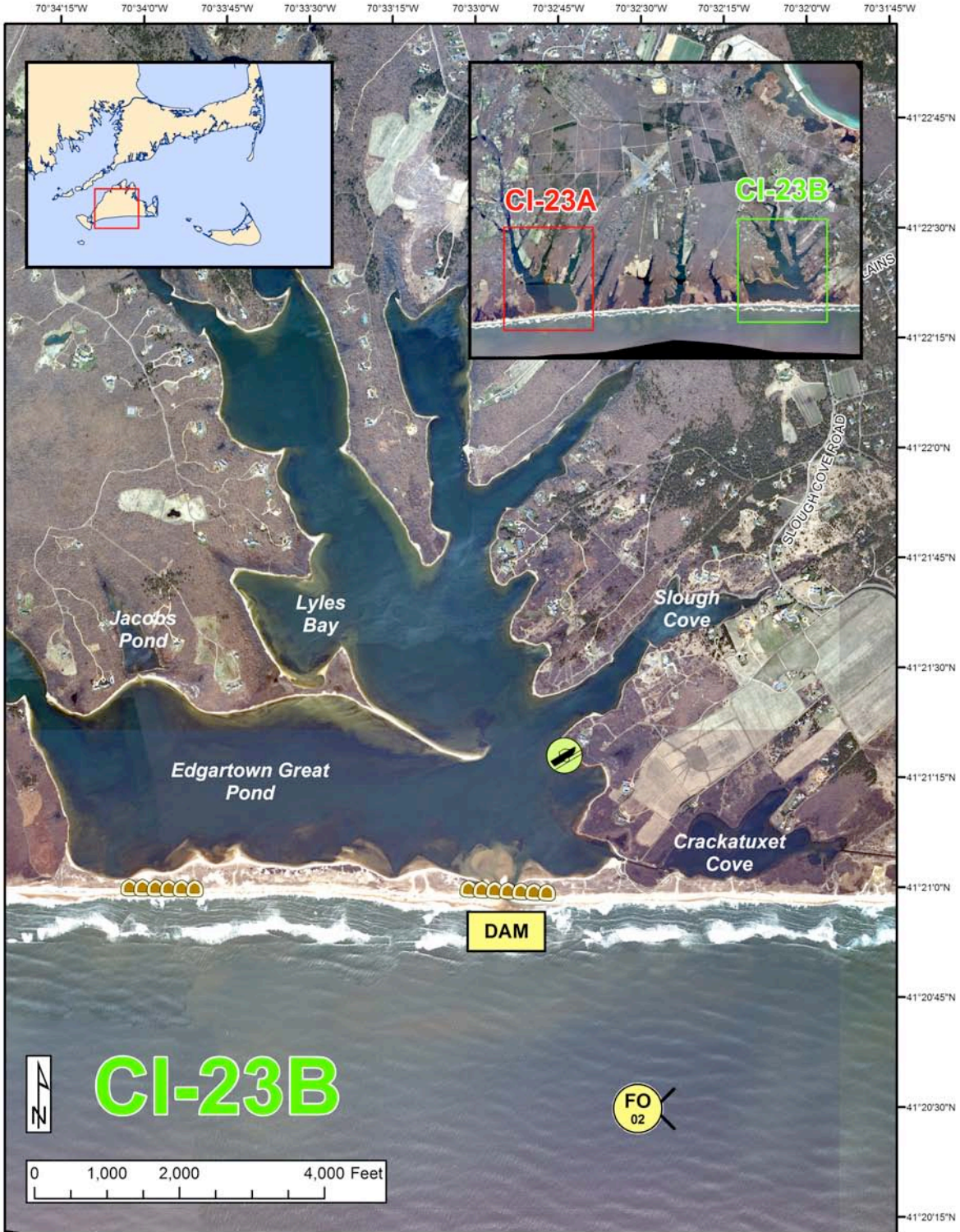
Map Legend			
<b>BB</b> Beach Berm	<b>DF</b> Deflection Booming	<b>MD</b> Mosquito Ditch	<b>U.S. Coast Guard Station</b>
<b>CB</b> Culvert Block	<b>EX</b> Exclusion Booming	<b>U.S. Coast Guard Station</b>	<b>Protected-water Boom (Flood Tide)</b>
<b>DV</b> Diversion Booming	<b>SR</b> Shoreside Recovery	<b>Boat Ramp</b>	<b>Protected-water Boom (Ebb Tide)</b>
<b>PR</b> Passive Recovery	<b>FO</b> Free-oil Recovery	<b>Snare or Sorbent Boom</b>	<b>Beach Berm Material</b>





# Cape and Islands Geographic Response Plan

## Martha's Vineyard Southshore CI-23





Map Legend			
<b>BB</b> Beach Berm	<b>DF</b> Deflection Booming	<b>MD</b> Mosquito Ditch	<b>Protected-water Boom (Flood Tide)</b>
<b>CB</b> Culvert Block	<b>EX</b> Exclusion Booming	<b>U.S. Coast Guard Station</b>	<b>Protected-water Boom (Ebb Tide)</b>
<b>DV</b> Diversion Booming	<b>SR</b> Shoreside Recovery	<b>Boat Ramp</b>	<b>Beach Berm Material</b>
<b>PR</b> Passive Recovery	<b>FO</b> Free-oil Recovery	<b>Snare or Sorbent Boom</b>	







**Cape and Islands Geographic Response Plan**  
Martha's Vineyard Southshore CI-23

ID	Location and Description	Response Strategy	Implementation
<p><b>CI-23-01</b></p> 	<p><b>Martha's Vineyard South Shore and Coastal Ponds</b></p> <p>These oil spill response tactics should be deployed in the event that there is a breach or threatened breach in the shoreline that exposes the ponds to incoming oil. They are generalized and need to be adapted to meet conditions in the field.</p>	<p><b>Dam</b></p> <p>When the breach in the shoreline is established and tidal flow is occurring regularly, use the dam tactic to keep oil from entering the intertidal areas and ponds on the south shore of Martha's Vineyard.</p>	<p>Transport earth-moving equipment to the area of the breach.</p> <p>At low tide, use nearby material to fill the breach to the ponds on the south shore of Martha's Vineyard.</p> <p>Tend throughout the tide.</p>
<p><b>CI-23-02</b></p> 	<p><b>Martha's Vineyard South Shore and Coastal Ponds</b></p> <p>Nearshore waters in the general area of: Lat. 41°18'59.3"N Lon. 70°37'01.7"W</p>	<p><b>Free-oil Recovery</b></p> <p>Maximize free-oil recovery in the offshore &amp; nearshore environment of the south shore of Martha's Vineyard depending on spill location and trajectory.</p> <p>Ensure that responders have experience with on-water free-oil recovery.</p>	<p>Deploy free-oil recovery strike teams upwind and up current of the south shore of Martha's Vineyard.</p> <p>Use aerial surveillance to locate incoming slicks.</p>





**Cape and Islands Geographic Response Plan**  
Martha's Vineyard Southshore CI-23

ID	Response Resources	Staging Area Site Access	Resources Protected	Special Considerations
<b>CI-23-01</b>  	<b>Deployment</b> <i>Equipment</i> Equipment-to be determined during a field survey 1 small backhoe or bulldozer <i>Vehicle</i> 1 ATV <i>Personnel/Shift</i> 2 total <b>Tending</b> <i>Vehicle</i> 1 ATV <i>Personnel/Shift</i> 2 total	The barrier beaches are accessible from the road system using ATV's. A small backhoe may be able to access these beaches.  Tisbury Great and Edgartown Ponds both have boat launches, although they are unpaved.	Fish-shellfish, finfish  Birds-waterfowl concentration  Habitat- marsh, sheltered tidal-flats  Human Use- high-use recreational area  Threatened & endangered species	Vessel master should have local knowledge.  Tested: not yet
<b>CI-23-02</b>  	Deploy multiple free-oil recovery strike teams as required to maximize interception of oil before it impacts sensitive areas.	Same as CI-23-01	Same as CI-23-01	Vessel master should have local knowledge.  Use extreme caution, shoal waters with rocks & continually shifting sand bars. Currents and winds are locally variable and can create dangerous operating environments.





**Site Photographs and Contact Information**



Clockwise from above (1) Possible washover example looking north. (2) Coastal pond no breach looking north. (3) Coastal pond showing possible washover area looking northeast. (4) Coastal Pond looking northeast. (5) Coastal pond looking northwest. (6) Closeup of possible washover or breach site looking north.



**Contact Information:**

Martha's Vineyard Communications Center: (508) 693-1212  
 Chilmark Harbormaster: (508) 645-2100 ext. 2136  
 Chilmark- Shellfish: (508) 465-2101  
 Chilmark Fire Chief: (508) 645-2550  
 Edgartown - Shellfish Warden:(508) 627-9819  
 Edgartown-Fire: (508) 627-5167  
 Edgartown-Harbormaster: (508) 627 4746  
 Edgartown-Shellfish Dept: (508) 627 6175  
 MV Commission: (508) 693-3453  
 USFWS: (413) 539-3194  
 W Tisbury Harbormaster: (508) 696-0102  
 W Tisbury Fire: (508) 693-9555

