

South Shore Geographic Response Plan – Site Survey for Kingston & Duxbury
Monday, June 13th, 2011

Attendees:

Dennis Carvalho – Kingston Harbormaster
Francis Ferioli – Kingston Harbormaster Dept.
Richard Murphy – Kingston Harbormaster Dept.
Mike Whiteside – MassDEP
Gregg Morris – Duxbury Oyster Farmer
Elise DeCola – Nuka Research & Planning Group LLC
Caleb Queen – Nuka Research & Planning Group LLC

Vessel:

Kingston Harbor and Duxbury Harbor were surveyed using a vessel from the Kingston Harbormaster's office.

Weather:

Overcast, winds around 10kts. Calm seas.

Tactics:

SS-14

Exclusion Booming by Powder Pt Bridge

To prevent oil from entering the Black River, deploy approximately 3000ft of protected water boom in front of the Power Pt Bridge. The boom may be angled to allow for shoreside recovery on the Western shore. Boom may be deployed from the boat ramp located on the Western shore.

Deflection Booming along Saquish Neck

Two possible deflection booming tactics are shown along Saquish Neck. Under favorable weather conditions, it may be possible to deploy the tactic at Gurnet Point, which would deflect oil away from the beach. However, a few locations along the beach consist of fine sand, which is ideal for shoreside recovery. To deflect oil away from the entrance to the Harbor, it may be possible to deploy 3 cascaded segments of boom from Saquish Head.

SS-15

Exclusion Booming in the Jones River

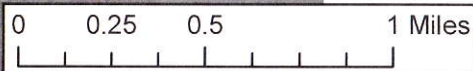
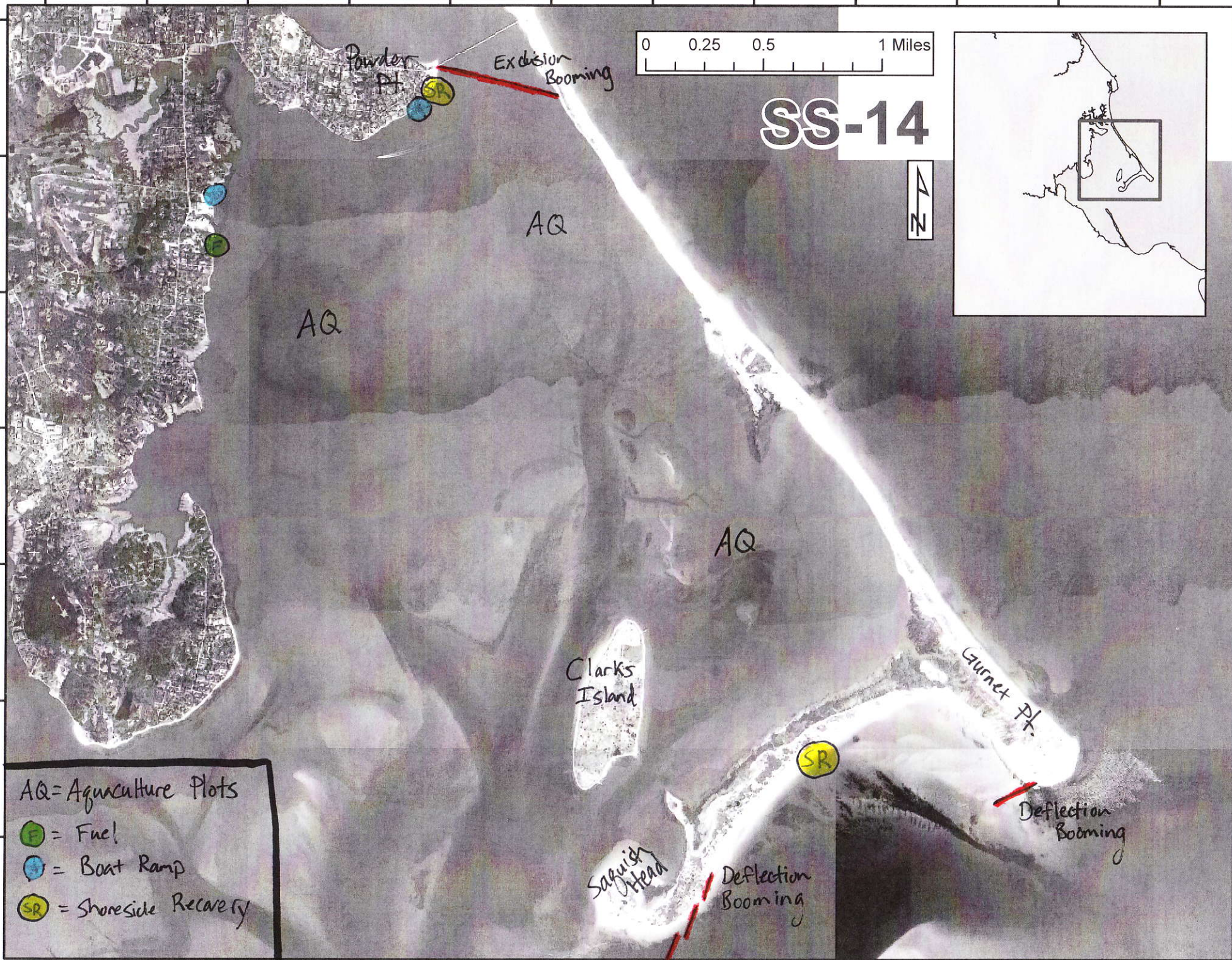
Deploy boom in a chevron formation at the mouth of the Jones River. This would prevent a spill in the harbor from entering the river and possibly moving upstream to the sensitive marshes. This tactic would be deployed from the boat ramp at the end of River Street (the Kingston Harbormaster's office is located here). In the event of a spill originating from Rt 3A, protected water boom may be deployed on either side of the bridge to prevent oil from migrating up or downstream.

Additional considerations

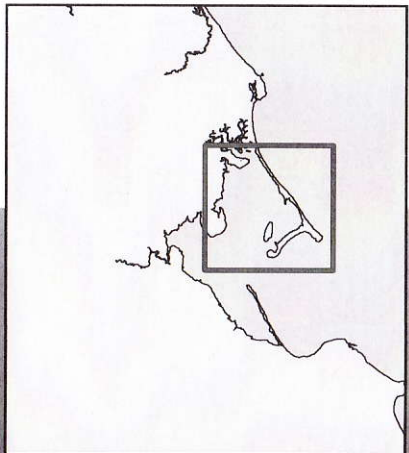
- There are numerous aquaculture plots located in this area. A potential exclusion tactic was discussed during the site survey. It may be possible to deploy boom around a few plots.
- There are aquaculture plots located under the docks at the Duxbury Yacht Club from May – September. These pens are located at the surface of the water. Therefore, it would be important to deploy boom around the docks to prevent oil from getting up under the structures and possibly entering the aquaculture plots.
- There is fuel located at the Duxbury Yacht Club.
- There is a boat ramp located near Standish Monument. Photographs of this ramp were taken during the site survey.

70°41'0"W 70°40'30"W 70°40'0"W 70°39'30"W 70°39'0"W 70°38'30"W 70°38'0"W 70°37'30"W 70°37'0"W 70°36'30"W 70°36'0"W 70°35'30"W

42°3'0"N



SS-14



42°2'30"N

42°2'0"N

42°1'30"N

42°1'0"N

42°0'30"N

42°0'0"N

AQ = Aquaculture Plots
● = Fuel
● = Boat Ramp
● = Shoreside Recovery

AQ

AQ

AQ

Powder Pt.

Exclusion Booming

Clarks Island

Saguish Head

Gurnet Pt.

Deflection Booming

Deflection Booming

70°43'0"W

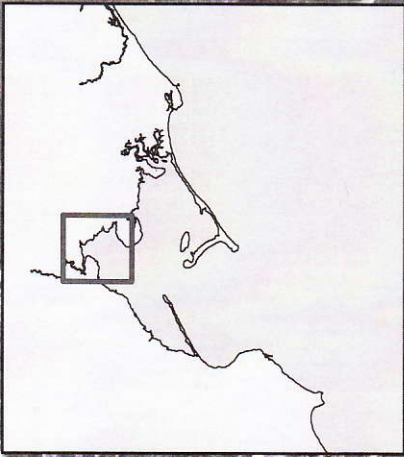
70°42'30"W

70°42'0"W

70°41'30"W

70°41'0"W

70°40'30"W



SS-15



42°1'30"N

42°1'0"N

42°0'30"N


42°0'0"N

41°59'30"N

41°59'0"N

AQ

Exclosure Booming

AQ = Aquaculture Plots
 = Boat Ramp

3A

AQ (upwellers)