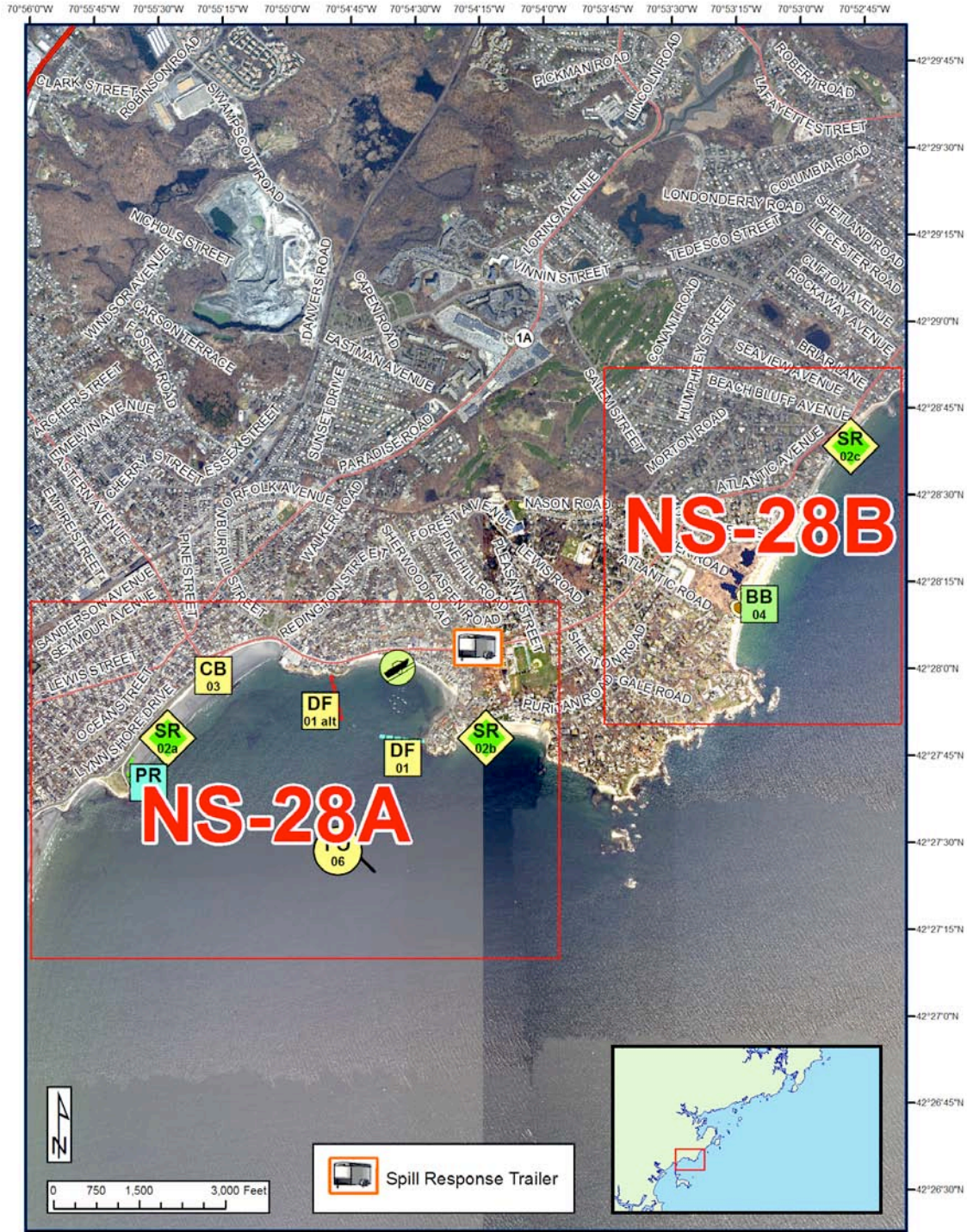




# North Shore Geographic Response Plan

## Swampscott Shoreline NS-28



Map Legend			
<b>BB</b> Beach Berm	<b>DF</b> Deflection Booming	<b>MD</b> Mosquito Ditch	<b>U.S. Coast Guard Station</b>
<b>CB</b> Culvert Block	<b>EX</b> Exclusion Booming	<b>U.S. Coast Guard Station</b>	<b>Protected-water Boom (Flood Tide)</b>
<b>DV</b> Diversion Booming	<b>SR</b> Shoreside Recovery	<b>Boat Ramp</b>	<b>Protected-water Boom (Ebb Tide)</b>
<b>PR</b> Passive Recovery	<b>FO</b> Free-oil Recovery	<b>Snare or Sorbent Boom</b>	<b>Beach Berm Material</b>

A total of 1 State Response Trailer is required to implement all of the tactics in this GRP. Responders should always consider on-scene conditions before deploying GRP tactics. Tactics may not be safe or effective under certain conditions. Responder safety should always be the first priority.





# North Shore Geographic Response Plan

## Swampscott Shoreline NS-28



**NS-28A**

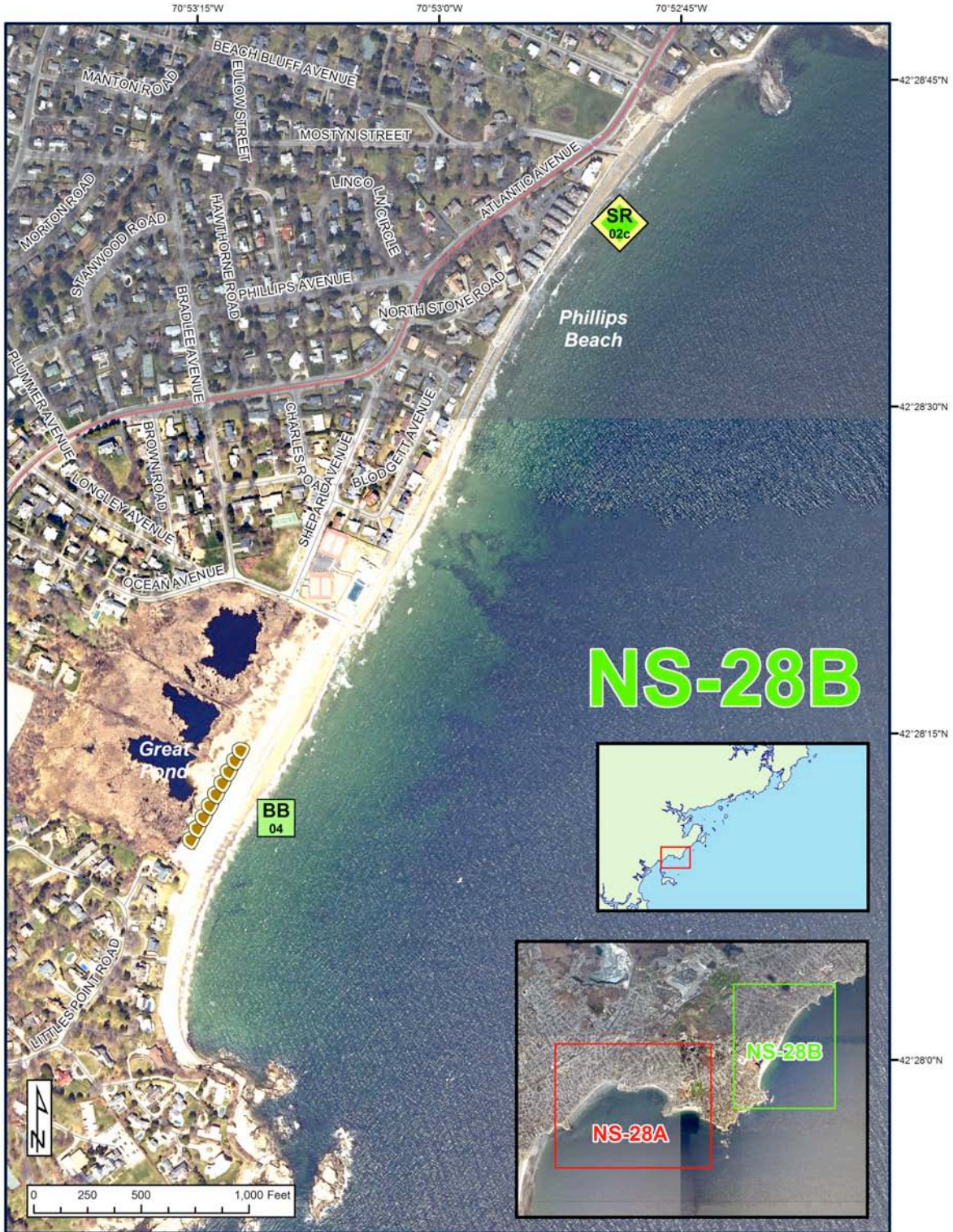
Map Legend			
<b>BB</b> Beach Berm	<b>DF</b> Deflection Booming	<b>MD</b> Mosquito Ditch	Protected-water Boom (Flood Tide)
<b>CB</b> Culvert Block	<b>EX</b> Exclusion Booming	U.S. Coast Guard Station	Protected-water Boom (Ebb Tide)
<b>DV</b> Diversion Booming	Shoreside Recovery	Boat Ramp	Snare or Sorbent Boom
<b>PR</b> Passive Recovery	Free-oil Recovery	Snare or Sorbent Boom	Beach Berm Material





# North Shore Geographic Response Plan

## Swampscott Shoreline NS-28








**NS-28B**

Map Legend			
<b>BB</b> Beach Berm	<b>DF</b> Deflection Booming	<b>MD</b> Mosquito Ditch	<b>Protected-water Boom (Flood Tide)</b>
<b>CB</b> Culvert Block	<b>EX</b> Exclusion Booming	U.S. Coast Guard Station	<b>Protected-water Boom (Ebb Tide)</b>
<b>DV</b> Diversion Booming	<b>SR</b> Shoreside Recovery	Boat Ramp	<b>Snare or Sorbent Boom</b>
<b>PR</b> Passive Recovery	<b>FO</b> Free-oil Recovery	Beach Berm Material	










**North Shore Geographic Response Plan**  
Swampscott Shoreline NS-28

ID	Location and Description	Response Strategy	Implementation
<p>NS-28-01</p> 	<p><b>Swampscott Shoreline</b> Lincoln House Point Lat. 42°27'47"N Lon. 70°54'28"W</p> <p>(alt)Blaney Rock Lat. 42°27'48"N Lon. 70°54'34"W</p>	<p><b>Deflection</b> Set either the primary or the alternate depending on trajectory of oil. Deflect oil away from Fisherman’s Beach to either free oil recovery or to the collection site on Kings Beach.</p>	<p>Deploy anchors and boom with skiffs.</p> <p>For oil approaching from the east, place 800 ft of 18” boom angled in a southwesterly direction from Lincoln House Point to deflect oil towards the Kings Beach collection site. If oil approaches from the south, set the (alt) deflection boom off of Blaney Rock and deflect oil to free oil recovery.</p> <p>Set anchors every 200 ft and adjust boom based on currents and tides.</p> <p>Tend throughout the tide.</p>
<p>NS-28-02</p> 	<p><b>Swampscott Shoreline</b> (a)Kings Beach Lat. 42°27'52"N Lon. 70°55'23"W</p> <p>(b)Whales Beach Lat. 42°27'50"N Lon. 70°54'19"W</p> <p>(c)Phillips Beach Lat. 42°28'20"N Lon. 70°53'08"W</p>	<p><b>Shoreside Recovery</b> Deploy shoreside recovery system at natural pooling location to remove oil from surface waters and shoreline.</p>	<p>Ease of access to natural pooling locations allows shore-based skimming systems and oil storage systems to be deployed.</p> <p>Add passive recovery along riprap.</p> <p>Response team may add additional deflection or containment boom to aid in recovery.</p>
<p>NS-28-03</p> 	<p><b>Swampscott Shoreline</b> Kings Beach Lat. 42°28'00"N Lon. 70°55'19"W</p>	<p><b>Culvert Block</b> Place culvert plugs and/or set exclusion boom to prevent oil from entering storm drainage system.</p>	<p>Install culvert block or set up exclusion boom at low tide. Due to the size of the outfall it is recommended that a barrier or gate be fabricated prior to an incident.</p> <p>Monitor the block to ensure blocking integrity.</p>
<p>NS-28-04</p> 	<p><b>Swampscott Shoreline</b> Great Pond Lat. 42°28'12"N Lon. 70°53'15"W</p>	<p><b>Beach Berm</b> Build a beach berm on top of natural berm in front of Great Pond to prevent oil entering pond during coastal storm.</p>	<p>If a storm surge threatens to over-wash the natural berm separating Great Pond from the ocean, build a beach berm approximately 300 ft long using sediments taken from the landward side of the natural berm. Coordinate all activity with the Swampscott Department of Public Works. Implement Beach Berm strategy only at the explicit direction of Unified Command. Maintain Beach Berm as needed, unplug drain on outgoing tide.</p>
<p>NS-28-05</p> 	<p><b>Nahant Bay</b></p>	<p><b>Free-Oil Recovery</b> Maximize free-oil recovery in the offshore &amp; nearshore environment of Nahant Bay depending on spill location and trajectory.</p>	<p>Deploy free-oil recovery strike teams upwind and up current of the port area.</p> <p>Use aerial surveillance to locate incoming slicks.</p> <p>Ensure that responders have experience with on-water free-oil recovery.</p>





**North Shore Geographic Response Plan**  
Swampscott Shoreline NS-28

ID	Response Resources	Staging Area Site Access	Resources Protected	Special Considerations
NS-28-01  	<b>Deployment</b> <b>Equipment (Primary)</b> 800 ft 18" boom 4 anchor systems 1 anchor stake <b>Vessels</b> 2 skiffs <b>Personnel/Shift</b> 8 total (1 vessel operator + 1 responder per vessel, 4 shoreside responders) <b>Tending</b> <b>Vessels</b> 1 skiff <b>Personnel/Shift</b> 4 total (1 vessel operator + 1 responder per vessel, 2 shoreside responders)	<b>Staging Area:</b> Swampscott Fire Department, 76 Burrill St: From Rt 1A to Burrill St.  <b>Site Access:</b> From Rt 129/Humphrey St to Puritan Rd to Lincoln House Point. (alt) From Rt 129/Humphrey St to Atlantic Ave to Ocean Ave  Boat Ramp available at division of Rt 129/Humphrey St and Puritan Rd. Also along Puritan Rd at Town Way.  Chart 13275-1	<b>Birds</b> – Nesting Sites, Seabirds, Shorebirds  <b>Invertebrates</b> – Shellfish, Urchins  <b>Habitat</b> – Beach, Rocky Shore, Tidal Flats  <b>Human Use</b> – Boat Ramp, Marina, Port/Harbor	Tide range 7 – 11 ft. Vessel master should have local knowledge.  Mudflats exposed at low tide.  Deflection strategy may need to be adjusted at each change of tide.  Entire site surveyed: 06/02/09.  Tested: not yet.
NS-28-02  	<b>Deployment</b> <b>Equipment</b> 3 shoreside recovery systems 6000 ft of snare or sorbent boom <b>Vehicle</b> 1 tractor with front end loader <b>Personnel/Shift</b> 8 shoreside responders	<b>Site Access:</b> (a) From Rt 1A/Lewis St to Rt 1A/Ocean St to Ocean Terrace to Lynn Shore Dr at Pierce Rd. (b) From Rt 129/Humphrey St to Puritan Rd to Town Way. (c) From Rt 129/Humphrey St to Atlantic Ave to Ocean Ave  Boat Ramp available at Rt 129/Humphrey St and Metropolitan Park.	Same as NS-28-01.	Remove oil at each change of tide.
NS-28-03  	<b>Deployment</b> <b>Transport</b> 1 Truck <b>Equipment</b> 1 pre-built culvert block or gate. <b>Personnel/Shift</b> 4 shoreside responders	<b>Site Access:</b> Corner of Rt. 129/Eastern Dr and Lynn Shore Dr.	Same as NS-28-01.	Coordinate with DPW.  Culvert block should be tested and stored at appropriate location.  Tested: not yet.
NS-28-04  	<b>Deployment</b> <b>Equipment</b> Local beach material <b>Vehicle</b> 1 tractor with front end loader <b>Personnel/Shift</b> 2 shoreside responders	From Rt 129/Atlantic Ave to Ocean Ave.	Same as NS-28-01.	Coordinate with DPW. Will need emergency permit from DEP. This strategy requires multi-agency approval, coordination and permitting. Implement only if directed by Unified Command.
NS-28-05  	Deploy multiple free-oil recovery strike teams as required to maximize interception of oil before it impacts sensitive areas.	<b>Site Access:</b> Vessel Platform  Via marine waters.  Chart 13275-1	Same as NS-28-01.	Vessel master should have local knowledge.  Free-oil recovery should only be attempted if conditions permit and by experienced responders.





**Site Photographs and Contact Information**



Town dock and boat ramp at mid tide on 02 June 2009. View looks northeast.



Northern shoreline of Swampscott. MassDEP, 14 April 2009.



Large box culvert at Kings Beach on 02 June 2009. View looks west.



Southern shoreline of Swampscott. MassDEP, 14 April 2009.



Natural beach berm in front of Great Pond at mid-tide on 02 June 2009. View looks west.

**Contact Information:**  
Swampscott Fire Department: 781-595-4050  
Swampscott Harbormaster: 781-596-8872  
Swampscott DPW: 781-596-8860  
Salem Sound Coastwatch: 978-741-7900  
U.S.C.G. Station Gloucester: 978-283-0705  
Mass Division of Marine Fisheries: 617-626-1520  
Environmental Police: 800-632-8075

