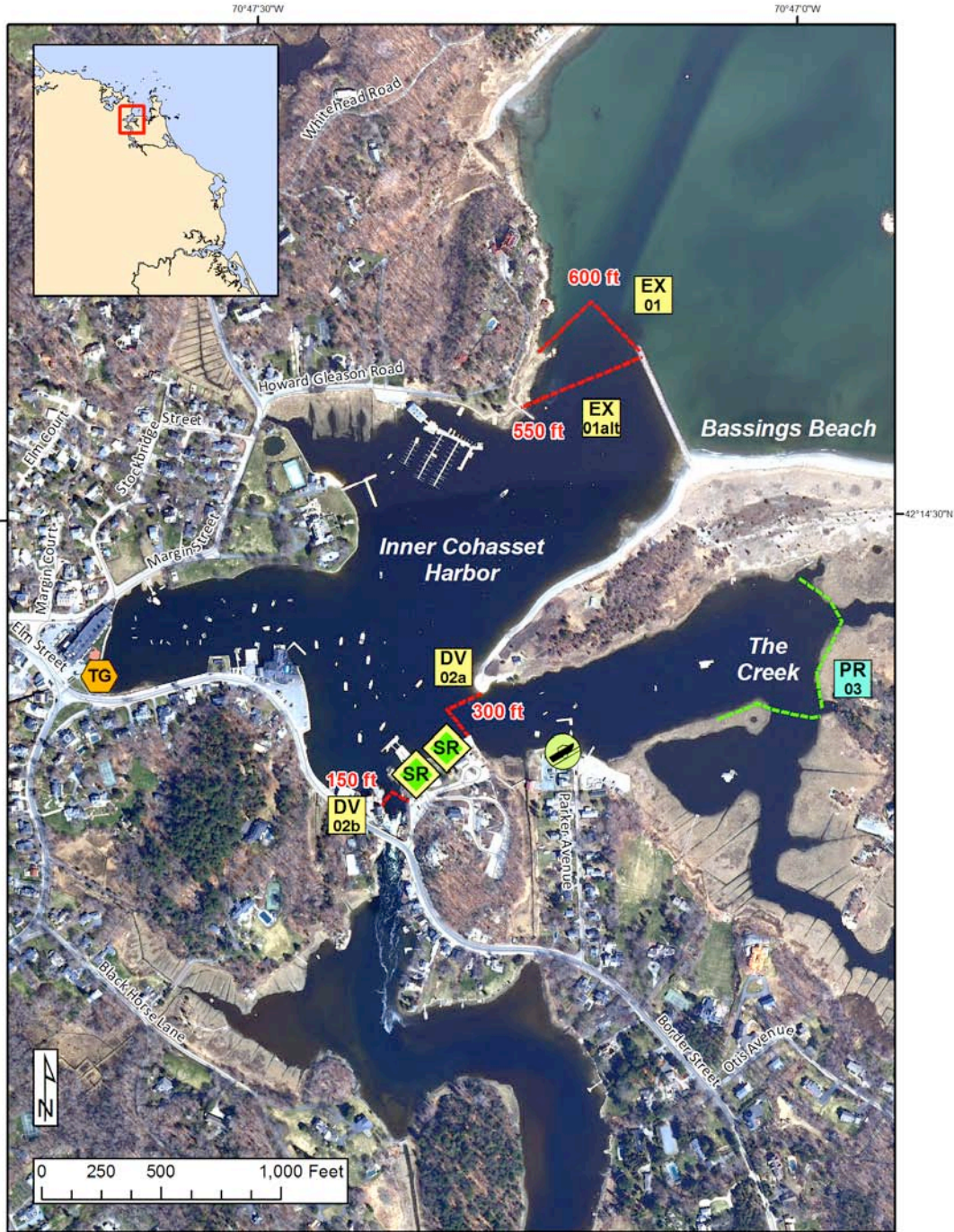




South Shore Geographic Response Plan

Inner Cohasset Harbor SS-02



Map Legend			
BB Beach Berm	DF Deflection Booming	TG Tide Gate	
CB Culvert Block	EX Exclusion Booming	Boat Ramp	
DV Diversion Booming	SR Shoreside Recovery	Beach Berm Material	Protected-water Boom (Flood Tide)
PR Passive Recovery	FO Free-oil Recovery	GRP Trailer Locations	Snare or Sorbent Boom





A total of 2 State Response Trailers are required to implement all of the tactics in this GRP. Responders should always consider on-scene conditions before deploying GRP tactics. Tactics may not be safe or effective under certain conditions. Responder safety should always be the first priority. The strategies contained within this plan have been designed to mitigate a potential off-shore or off-site release that could impact the subject plan area. When responding to other types of spills these tactics will likely require significant modification.





South Shore Geographic Response Plan

Inner Cohasset Harbor SS-02





ID	Location and Description	Response Strategy	Implementation
SS-02-01 	a.) The Jetty Lat. 42°14'36.41"N Lon. 70°47'11.51"W alt.) The Jetty Lat. 42°14'36.41"N Lon. 70°47'11.51"W	Exclusion Booming Exclude oil from entering the sensitive marshes and interior harbor system.	a.) Deploy 600ft of boom in a closed chevron formation from the jetty to the western shore. alt.) In the event that EX-01a is not feasible, deploy 550ft of boom in a single segment from the jetty to the opposite shoreline. Both of these tactics depend upon wind direction and can be modified. Deploy anchors every 200ft and tend throughout the tidal cycle.
SS-02-02 	a.) Entrance to The Creek Lat. 42°14'21.97"N Lon. 70°47'17.53"W b.) River near Harbormaster's office Lat. 42°14'18.74"N Lon. 70°47'24.66"W	Divert & Collect On a flooding tide, divert oil to shoreside collection points.	a.) Deploy 300ft of boom in a closed chevron formation from the shore near the Cohasset Harbormaster's office. Shoreside recovery should be set up on the southern shore near the Cohasset Harbormaster's office. b.) Deploy 150ft of boom in a closed chevron formation across the entrance to the river that flows into Cohasset Harbor. Deploy anchors at the apex of the chevrons and tend boom throughout tidal cycle.
SS-02-03 	The Creek Lat. 42°14'23.07"N Lon. 70°46'59.78"W	Passive Recovery Deploy passive recovery tactics to recover oil and prevent it from entering sensitive areas.	Place snare or sorbent boom along marsh front to minimize damage and facilitate recovery. Due to tidal range, it is important to tend boom throughout the tidal cycle. Replace as necessary to maximize the recovery.
SS-02 	Near Elm Street Lat. 42°14'23.29"N Lon. 70°47'39.41"W	Tide Gate Contact the Department of Public Works to close the tide gate.	Tide gates act as a very effective exclusion tactic. If needed, deploy hard boom or sorbent material around the entrance to the tide gate to ensure a proper seal.





South Shore Geographic Response Plan

Inner Cohasset Harbor SS-02

ID	Response Resources	Staging Area Site Access	Resources Protected	Special Considerations
SS-02-01 	Deployment Equipment 600 ft 18" boom 2 anchor systems 2 anchor stakes Vessels 2 skiffs Personnel/Shift 6-8 total (1 vessel operator + 1 responder per vessel, 4 shoreside responders) Tending Vessels 1 skiff Personnel/Shift 3-4 total (1 vessel operator + 1 responder per vessel, 2 shoreside responders)	From South Main Street, turn on to Summer Street. Continue on as Summer St turns into Border Street. Turn left on Parker Ave and follow to the end. There is a boat ramp located at the Cohasset Harbor Marina. NOAA Chart 13269	Fish – Anadromous, Finfish Invertebrates – Lobster, crab, shrimp, shellfish Birds – Shorebirds, Seabirds Threatened Species – Roseate Tern Human Use – Boat Ramp, Marina, Recreational Fishing, Water Intake Habitat - Beach, Marsh, Rocky, Tidal Flats	Vessel master should have local knowledge. Consider the time of year and relative presence of recreational boats when preparing to implement these strategies. Consult with the local harbormaster to develop a plan to address the presence of recreational boaters. Consider encouraging the immediate removal of recreational boats from target areas in the event of a spill if time allows. Tested: not yet
SS-02-02 	Deployment Equipment 450 ft 18" boom 2 anchor systems 4 anchor stakes 2 shoreside recovery systems Vessels/Personnel & Tending Same as SS-02-01	Same as SS-02-01	Same as SS-02-01	Same as SS-02-01
SS-02-03 	Deployment Equipment 1000 ft. of snare or sorbent boom 10 anchor stakes Personnel/Shift 6 shoreside responders	Same as SS-02-01	Same as SS-02-01	Use snare boom for persistent oils and sorbent boom for non-persistent oils. Responders should determine if attempting to deploy the boom would do more harm to the marsh.
SS-02 	Contact the Department of Public Works to close the tide gate.	The tide gate is located along Elm Street at the waterfront.	Same as SS-02-01	Responders implementing this strategy should immediately consult with UC and appropriate local officials knowledgeable in the operation and limitations of tide gate. If this strategy is implemented the tide gate system must be monitored throughout the tidal cycle. Special considerations include potential localized flooding and personnel injury.





Site Photographs and Contact Information



View looking southwest towards the tide gate near Elm Street. (TG)



Boat Ramp located at Cohasset Harbor Marina.



View looking north towards shoreline recovery location on southern shore for DV-02a. The boat ramp can be seen in the bottom right hand corner



Tide gate located on Border Street. (TG)



View looking east towards The Creek. (PR-03)

Contacts:

Cohasset Harbormaster: 781-383-0863
Cohasset Fire Dept: 781-383-6154
Cohasset Dept of Emergency Management: 781-383-0388
Cohasset Dept of Public Works: 781-383-0273
Mass. Dept of Environmental Protection (24 Hours):
888-304-1133
U.S. Coast Guard (24 Hours): 617-223-5750

