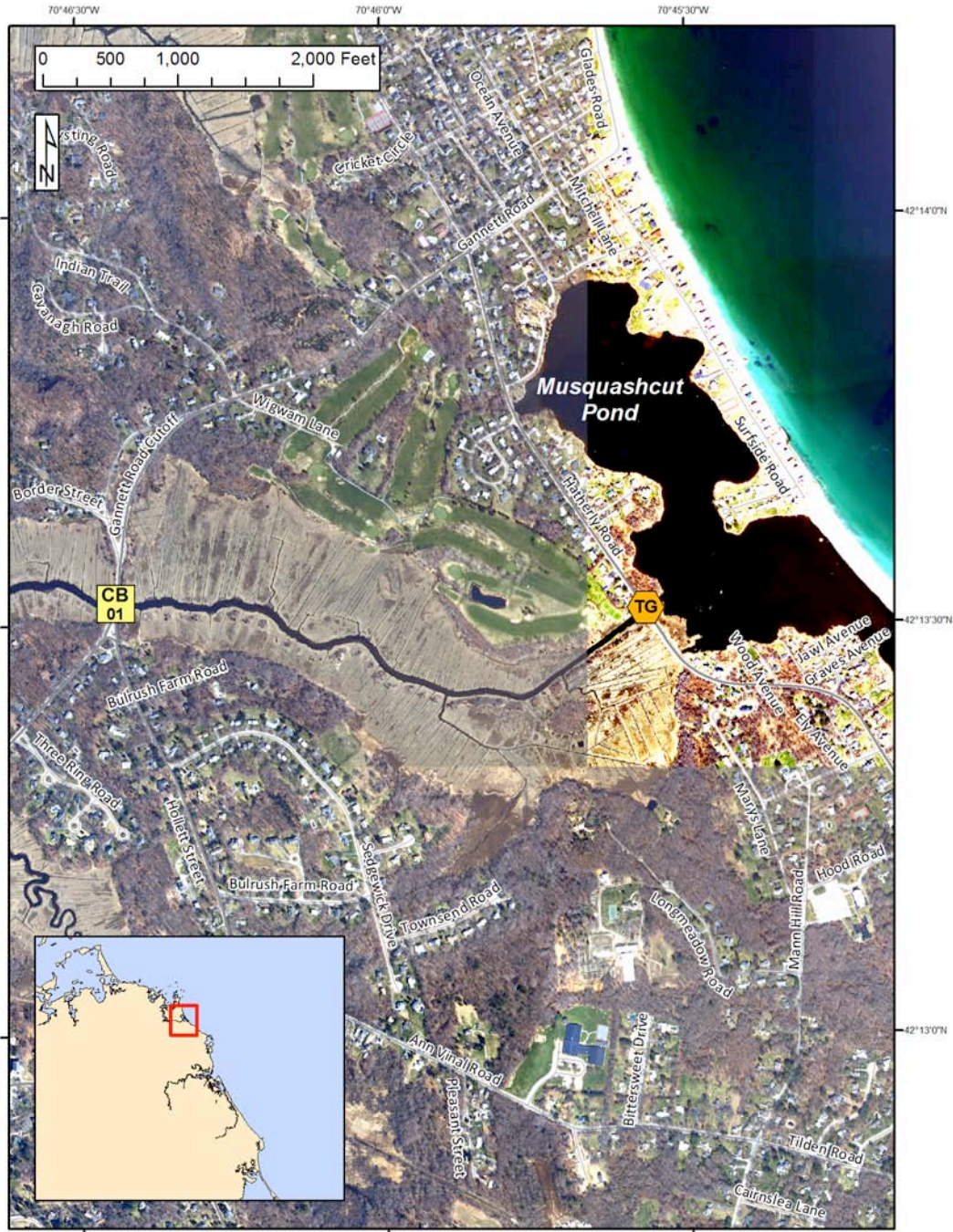




South Shore Geographic Response Plan

Musquashcut Pond SS-03



BB Beach Berm	DF Deflection Booming	TG Tide Gate	Map Legend
CB Culvert Block	EX Exclusion Booming	Boat Ramp	
DV Diversion Booming	SR Shoreside Recovery	Beach Berm Material	
PR Passive Recovery	FO Free-oil Recovery	GRP Trailer Locations	
			Protected-water Boom (Flood Tide)
			Snare or Sorbent Boom



No State Response Trailers are required to implement the tactics in this GRP.

Responders should always consider on-scene conditions before deploying GRP tactics. Tactics may not be safe or effective under certain conditions. Responder safety should always be the first priority. The strategies contained within this plan have been designed to mitigate a potential off-shore or off-site release that could impact the subject plan area. When responding to other types of spills these tactics will likely require significant modification.





South Shore Geographic Response Plan
Musquashcut Pond SS-03



ID	Location and Description	Response Strategy	Implementation
SS-02-01 	Gannett Road Lat. 42°13'31.55"N Lon. 70°46'26.20"W	Culvert Blocking Exclude the flow of oil through the culvert.	At low tide, place plywood or similar sheeting material across the entrance of the culvert. Use plastic sheeting to ensure the seal. Stack adequate sandbags against the plywood sheeting to counter the out flow pressure from the intertidal area.
SS-02 	Tide Gate at Musquashcut Pond Lat. 42°13'30.97"N Lon. 70°45'33.95"W	Tide Gate Prevent oil from migrating into or out of Musquashcut Pond.	Tide gates act as a very effective exclusion tactic. If needed, deploy hard boom or sorbent material around the entrance to the tide gate to ensure a proper seal. Contact the Department of Public Works to close the tide gate.





South Shore Geographic Response Plan

Musquashcut Pond SS-03

ID	Response Resources	Staging Area Site Access	Resources Protected	Special Considerations
SS-02-01 	Deployment <i>Transport</i> 1 Truck Equipment 2 sheets of plywood 100-200 sandbags 2 Polyethylene Sheeting Vessels/Personnel/Shift & Tending 3 shoreside responders	From Rt 3A, turn on to Gannett Road. The tide gate is located at intersection of Gannett Road and Hollett St.	Fish – Anadromous Birds – Shorebirds, Seabirds Threatened Species – Roseate Tern Habitat - Beach, Marsh, Rocky, Tidal Flats	Responders implementing this strategy should immediately consult with UC and appropriate local officials knowledgeable in the operation and limitations of the culvert. If this strategy is implemented, the culvert system must be monitored throughout the tidal cycle. Special considerations include potential localized flooding and personnel injury. Tested: Not tested yet.
SS-02 	Contact the Department of Public Works to close the tide gate.	For the tide gate at Musquashcut Pond, continue on Gannett Road and turn right on to Hatherly Road.	Same as SS-02-01	Responders implementing this strategy should immediately consult with UC and appropriate local officials knowledgeable in the operation and limitations of tide gate. If this strategy is implemented the tide gate system must be monitored throughout the tidal cycle. Special considerations include potential localized flooding and personnel injury.





Site Photographs and Contact Information



Culvert located along Gannett Rd.

Contacts:

Scituate Harbormaster: 781-545-2130
Scituate Fire Dept: 781-545-8749
Scituate Conservation Commission: 781-545-8721
Scituate Department of Public Works: 781-545-8731
Mass. Dept of Environmental Protection (24 Hours):
888-304-1133
U.S. Coast Guard (24 Hours): 617-223-5750



Culvert located along Gannett Rd.

